

DIGITAL INDICATORS S_DIAL

The electronic indicators are equipped with a linear sensor and an engraved scale glued on the measuring spindle. A sensor replaces the gears. The analogic display is transformed into a digital display.

The SYLVAC electronic indicator program covers the entire range of mechanical indicators with resolutions 0.1 to 0.0001mm and measuring range up to 150mm, and with much better accuracy.

Sylvac inductive measuring system (patented)

Data output

Power supply: Lithium battery 3V, Type CR 2032

Operational temperature: +5 to +40°C

mm/inch conversion



SUMMARY OF ALL TYPES

	S233							S234		BASIC						S_Dial WORK		ANALOG		ADVANCED IP67			PLC				
	905.4121	905.4125	905.4140	905.4521	905.4525	905.4540	905.4511	905.4515	905.4527	905.4321	905.4322	805.1201	805.1301	805.1401	805.1501	805.1601	805.1621	805.5307	805.5507	805.5305	805.5505	805.5625	805.7301	805.7201	805.7501	805.7401	
RANGE																											
0.5 mm																											
0.8 mm																											
5 mm																											
12.5 mm																											
25 mm																											
50 mm																											
100 mm																											
150 mm																											
RESOLUTION																											
0.01 mm																											
0.001 mm																											
MECHANIC																											
Diameter 8 mm h6																											
Diameter 25mm g7																											
Dove tail																											
M1.4 contact point																											
M2.5 contact point																											
Rubber boot																											
IP51 (IEC 60529)																											
IP54 (IEC 60529)																											
IP65 (IEC 60529)																											
IP67 (IEC 60529)																											
DIAL																											
Diameter 44 mm																											
Diameter 60 mm																											
Rotating																											
Vertical display																											
FUNCTIONS																											
mm/inch																											
Preset																											
Preset onMin/Max																											
Measuring direction																											
Hold																											
Min / Max / Delta																											
Tolerances																											
Absolute function (ABS)																											
Absolute system S.I.S*																											
Auto off																											
Analog display																											
Setting by PC																											
Programmable menus																											
Powered by connector																											
Multiplication factor																											
Ref I / II																											

B

Digital indicators

S_Dial

SUMMARY OF ALL TYPES

	S_Dial WORK																S_Dial PRO											
	ADVANCED						BLUETOOTH® Smart				NANO & NANO BT		ANALOG NANO BT		BASIC													
	805.5201	805.5301	805.5401	805.5501	805.5601	805.5621	805.5641	805.5661	805.5671	805.5681	805.6301	805.6501	805.6621	805.6661	805.5306	805.5506	805.6306	805.6506	805.6307	805.6507	805.8601	805.8701	805.8602	805.8702	805.8501	805.8502	805.8661	
RANGE																												
0.5 mm																												
0.8 mm																												
5 mm																												
12.5 mm	•	•									•				•		•		•									
25 mm			•	•								•				•		•		•						•	•	
50 mm					•	•							•								•	•	•	•				
100 mm							•	•						•														•
150 mm									•	•																		
RESOLUTION																												
0.01 mm	•	•			•		•		•																			
0.001 mm		•		•		•		•		•	•	•	•															
0.0001 mm															•	•	•	•	•	•	•	•	•	•	•	•	•	•
MECHANIC																												
Diameter 8 mm h6	•	•	•	•	•	•	•	•	•	•	•	•	•	•	•	•	•	•	•	•	•	•	•	•	•	•	•	•
Diameter 25 mm g7																						•		•				
Spring	•	•	•	•	•	•	•	•	•	•	•	•	•	•	•	•	•	•	•	•	•	•	•	•	•	•	•	•
M1.4 contact point																												
M2.5 contact point	•	•	•	•	•	•	•	•	•	•	•	•	•	•	•	•	•	•	•	•	•	•	•	•	•	•	•	•
Rubber boot																												
IP51 (IEC 60529)																						•	•	•	•	•	•	•
IP54 (IEC 60529)	•	•	•	•	•	•	•	•	•	•	•	•	•	•	•	•	•	•	•	•	•	•	•	•	•	•	•	•
DIAL																												
Diameter 44 mm																												
Diameter 60 mm	•	•	•	•	•	•	•	•	•	•	•	•	•	•	•	•	•	•	•	•	•	•	•	•	•	•	•	•
Rotating	•	•	•	•	•	•	•	•	•	•	•	•	•	•	•	•	•	•	•	•	•	•	•	•	•	•	•	•
FUNCTIONS																												
mm/inch	•	•	•	•	•	•	•	•	•	•	•	•	•	•	•	•	•	•	•	•	•	•	•	•	•	•	•	•
Preset	•	•	•	•	•	•	•	•	•	•	•	•	•	•	•	•	•	•	•	•	•	•	•	•	•	•	•	•
Preset on Min/Max																					•	•						
Measuring direction	•	•	•	•	•	•	•	•	•	•	•	•	•	•	•	•	•	•	•	•	•	•	•	•	•	•	•	•
Hold	•	•	•	•	•	•	•	•	•	•	•	•	•	•	•	•	•	•	•	•	•	•	•	•	•	•	•	•
Min / Max / Delta	•	•	•	•	•	•	•	•	•	•	•	•	•	•	•	•	•	•	•	•	•	•	•	•	•	•	•	•
Tolerances	•	•	•	•	•	•	•	•	•	•	•	•	•	•	•	•	•	•	•	•	•	•	•	•	•	•	•	•
Absolute system S.I.S.*	•	•	•	•	•	•	•	•	•	•	•	•	•	•	•	•	•	•	•	•	•	•	•	•	•	•	•	•
Auto off	•	•	•	•	•	•	•	•	•	•	•	•	•	•	•	•	•	•	•	•	•	•	•	•	•	•	•	•
Analog display																					•	•						
BLUETOOTH® Smart											•	•	•	•							•	•						
Setting by PC	•	•	•	•	•	•	•	•	•	•	•	•	•	•	•	•	•	•	•	•	•	•	•	•	•	•	•	•
Programmable menus	•	•	•	•	•	•	•	•	•	•	•	•	•	•	•	•	•	•	•	•	•	•	•	•	•	•	•	•
Powered by connector	•	•	•	•	•	•	•	•	•	•	•	•	•	•	•	•	•	•	•	•	•	•	•	•	•	•	•	•
Multiplication factor	•	•	•	•	•	•	•	•	•	•	•	•	•	•	•	•	•	•	•	•	•	•	•	•	•	•	•	•
Ref I / II	•	•	•	•	•	•	•	•	•	•	•	•	•	•	•	•	•	•	•	•	•	•	•	•	•	•	•	•

B

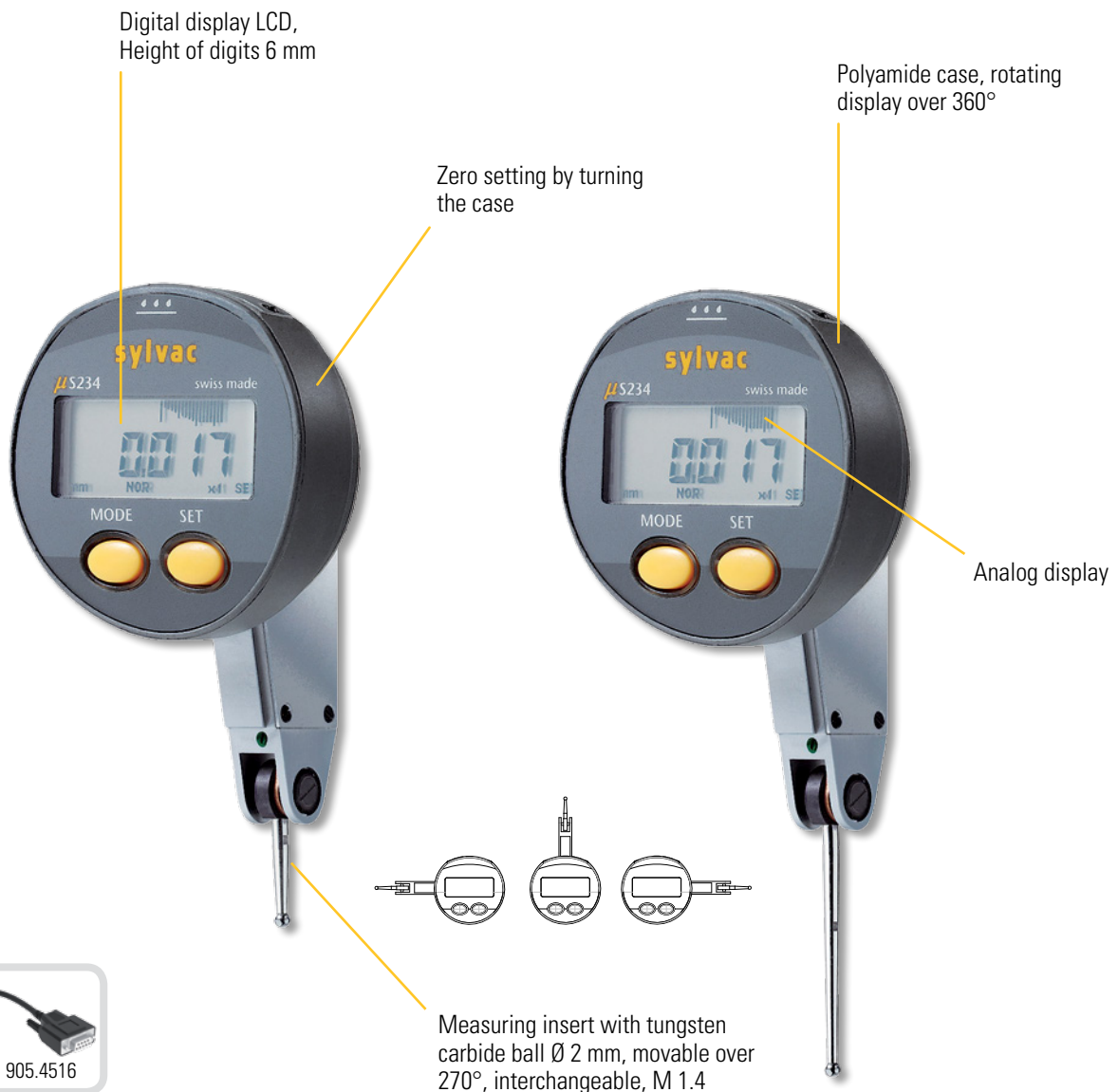
* SIS description on page 5

Digital test indicators

S_Dial S234

DESCRIPTION

- Digital and analog display
- Water and coolant resistant IP65
- Data output RS 232 combined with external power
- Automatic switch OFF
- Stem \varnothing 8 mm and dovetail back
- Rotating display over 360°

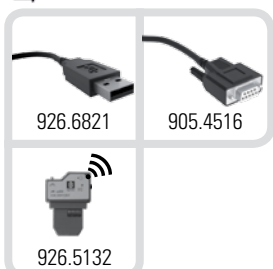


SWISS MADE

WATER RESISTANT

IP65

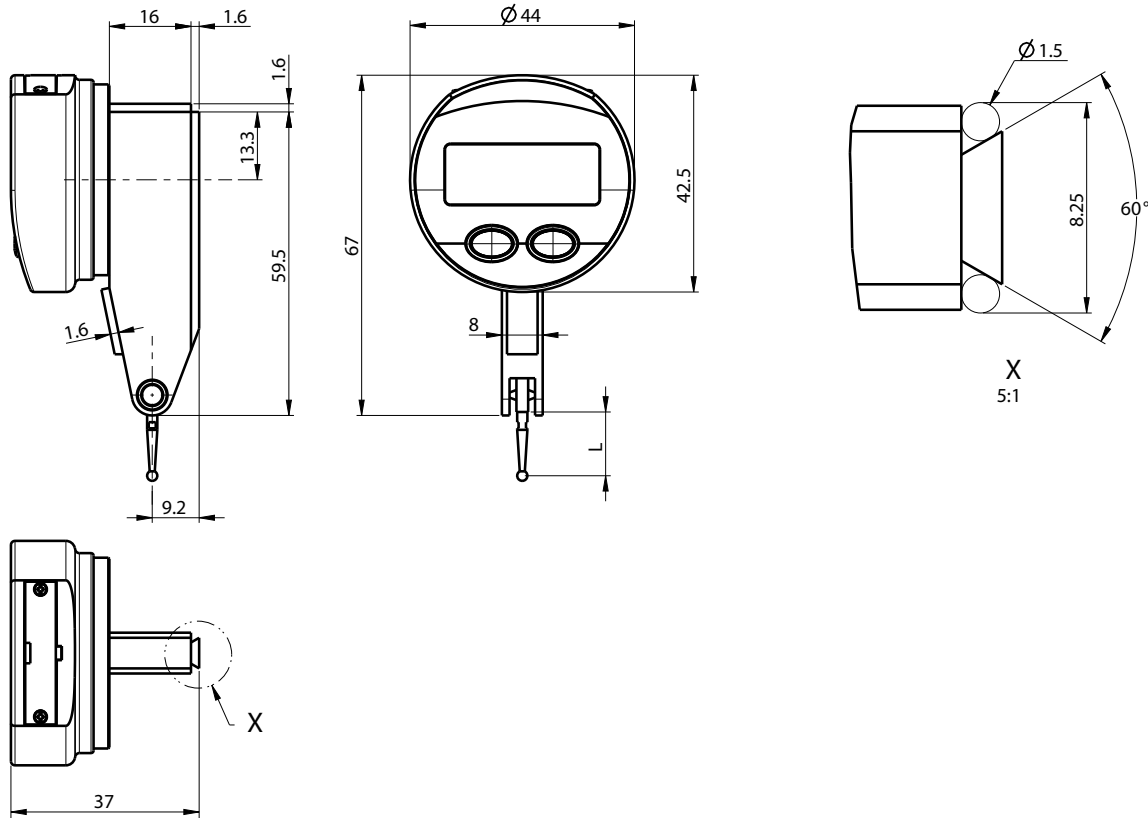
POWER



Digital test indicators

S_Dial S234

DIMENSIONAL DRAWING



TECHNICAL SPECIFICATIONS

		905.4321	905.4322
Measuring range	mm	0.8	0.5
Probe length	mm	12.5	36.5
Max Error fe	µm	10	10
Hysteresis fu	µm	3 ¹⁾	4 ¹⁾
Resolution	mm	0.001	0.001
Repeatability	µm	3	3
Measuring force	N	0.13 ± 15%	0.07 ± 15%
Weight		75	75
Protection rating according to IEC 60529		IP65	
S_Connect : Power		USB / RS232 / Wireless ²⁾	
Zero setting		●	
min / max / delta display		●	
Analog scale range ratio		●	
Selection of resolution		●	
Preset		max 99.999	

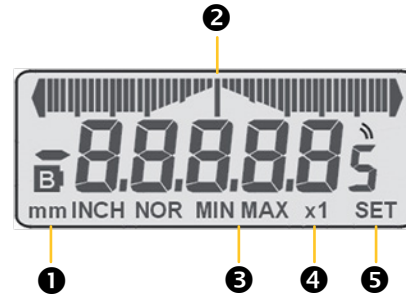
¹⁾ ± 1 digit

²⁾ see cables chapter

B

DISPLAY

- ➊ Direct mm/inch conversion
- ➋ Analog display
- ➌ Min/max/delta mode
- ➍ Analogic resolution display
- ➎ Zero setting



BASIC INSTRUMENT

- Instrument according to technical specifications
- Lithium battery CR2032 included
- Instruction manual
- Stem \varnothing 8 mm

APPLICATIONS



Run-out measurement



Checking the alignment on milling machine.



Perpendicularity measurement with a S234 mounted on a Hi_Gage ONE

Mini digital indicators

S_Dial S233

DESCRIPTION

- Compact, small diameter (Ø44 mm)
- Water and coolant resistant, protection rating IP65 according to IEC 60529
- Data output RS 232 combined with external power supply.
- Interchangeable contact point M2.5
- Clamping stem Ø 8-h6 of hardened and ground stainless steel. Dovetail back
- Automatic power shut down

Standard

Analog

Vertical

Polyamide case, fixed display

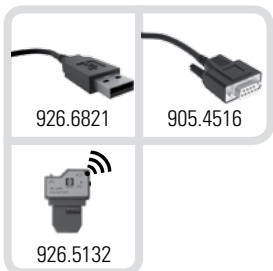
Digital display LCD, Height of digits 6 mm



SWISS MADE

WATER RESISTANT

IP65 POWER



Stainless steel measuring pin, ground

Clamping Ø 8-h6

Rubber boot on protected version

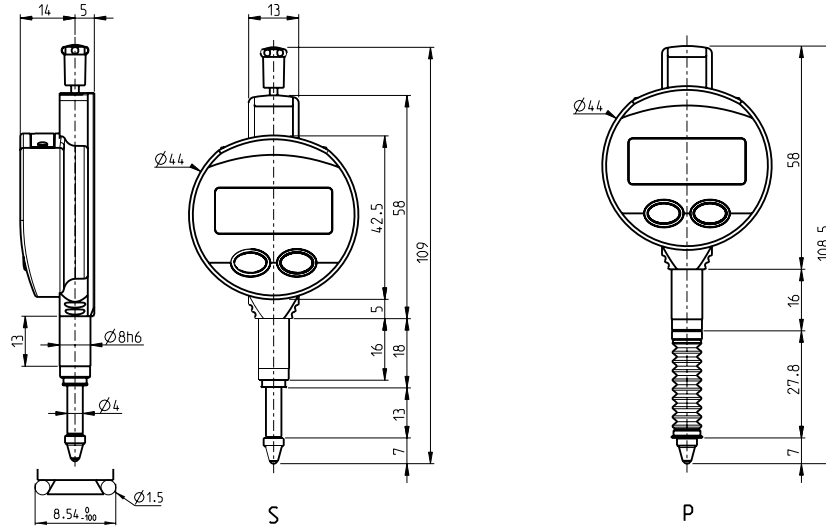
Interchangeable contact point, stainless steel with TC ball

Mini digital indicators

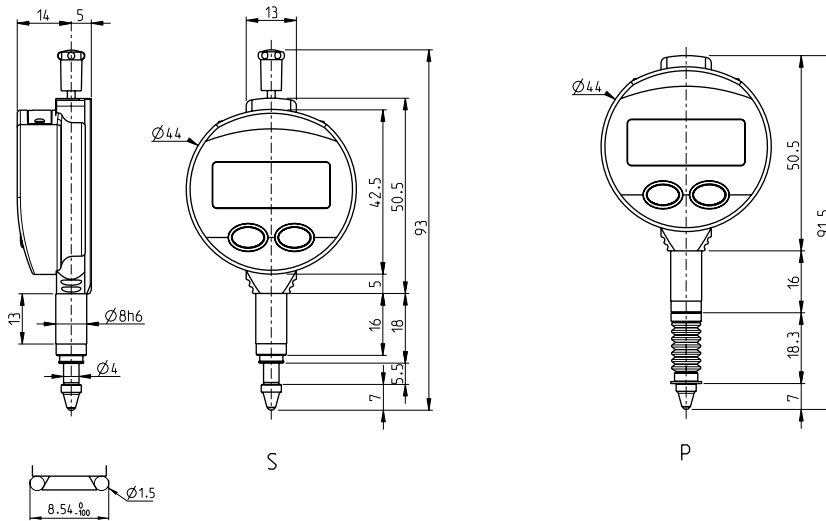
S_Dial S233

DIMENSIONAL DRAWINGS

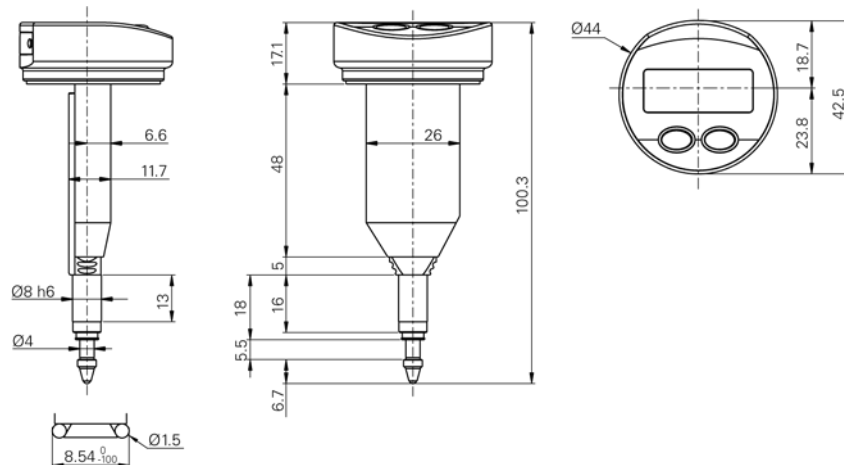
Standard



Analog



Vertical



S = standard

P = protected

TECHNICAL SPECIFICATIONS

		905.4140	905.4540	905.4511	905.4515
Measuring range	mm	5	5	5	5
Display 90°		●	●	---	---
Analog scale		---	---	●	●
Resolution	mm	0.01	0.001	0.001	0.001
Execution ³⁾		S	S	S	P
Max. Error fe	μm	10 ¹⁾	5	4	4
Repeatability	μm	2	2	2	2
Measuring force	N	0.50 - 0.65 ²⁾	0.50 - 0.65 ²⁾	0.50 - 0.65 ²⁾	0.60 - 1.20 ²⁾
Zero setting		●	●	●	●
REL and ABS measurement		●	●	---	---
Resolution selection		---	●	●	●
PRESET = (max. 130 mm)		●	●	●	●
Min / max / delta display		---	---	●	●
Selection of measuring direction		●	●	---	---
S_Connect : Power		USB / RS232 / Wireless ⁴⁾			
IP rating		IP65			

		905.4121	905.4125	905.4521	905.4525	905.4527
Measuring range	mm	12.5	12.5	12.5	12.5	12.5
Analog scale		---	---	---	---	---
Resolution	mm	0.01	0.01	0.001	0.001	0.001
Execution ³⁾		S	P	S	P	S
Max. Error fe	μm	10 ¹⁾	10 ¹⁾	5	5	5
Repeatability	μm	2	2	2	2	2
Measuring force	N	0.5 - 0.90 N	0.6 - 1.3 N	0.5 - 0.90 N	0.6 - 1.3 N	0.5 - 0.90 N
Zero setting				●		
REL and ABS measurement				●		
Resolution selection		---	---	●	●	●
PRESET = (max. 130 mm)				●		
Min / max / delta display				---		
Selection of measuring direction				●		
Multiplication factor				---		●
S_Connect : Power		USB / RS232 / Wireless ⁴⁾				
IP rating		IP65				

¹⁾ ± 1 digit

²⁾ Values ± 20%, indicator in vertical position, outgoing measuring spindle

³⁾ S = Standard P = Protected

⁴⁾ see cables chapter

Mini digital indicators

S_Dial S233

BASIC INSTRUMENT

- Instrument according to technical specifications
- Lithium battery CR2032 included
- Instruction manual
- Calibration certificate for instruments with resolution 0.001 mm

MEASURING FORCE FOR RANGE 12.5 mm

	S	P
Standard	0.5 - 0.90 N	0.6 - 1.3 N
Low ¹⁾	0.35 - 0.50 N	---
High ¹⁾	1.80 - 2.3 N	---

Tolerance $\pm 20\%$, indicator in vertical position, spindle in outgoing measurement.

¹⁾ on request

APPLICATIONS



Checking of an internal \varnothing with a mechanical device



Measurement of the vertical displacement of an element



Measurement of internal chamfer

Digital indicators

S_Dial WORK

DESCRIPTION

BASIC

- Robust construction
- Water and coolant resistant
- **Standard functions (mm/inch, preset, direction of measurement)**
- Automatic wake-up and sleeping mode, **Absolute System S.I.S***

B



SWISS MADE

SIS Smart Inductive System

WATER RESISTANT

PROXIMITY

926.6721	926.6723
926.5133	

POWER

926.6821	905.4516
926.5132	

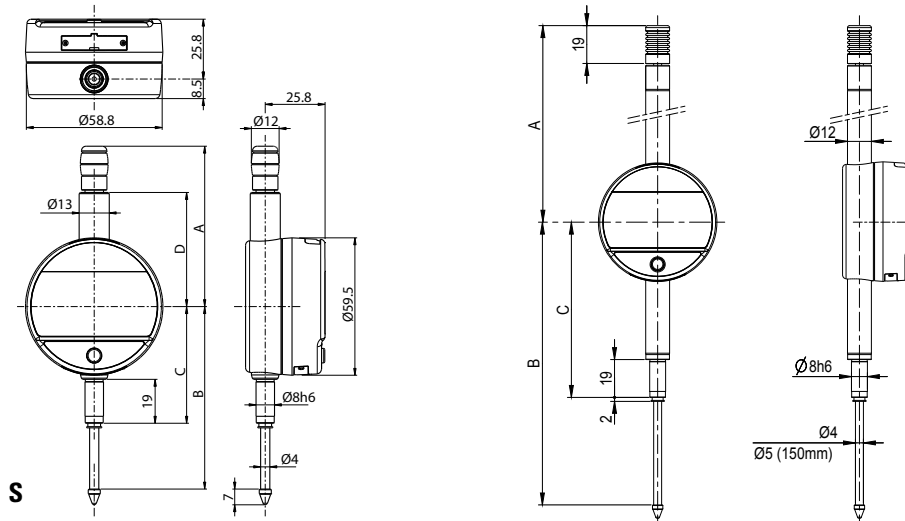
* SIS description on page 5

Digital indicators

S_Dial WORK

DIMENSIONAL DRAWINGS

BASIC



TECHNICAL SPECIFICATIONS

		805.1201	805.1301	805.1401	805.1501	805.1601	805.1621
Measuring range	mm	12.5	12.5	25	25	50	50
Resolution	mm	0.01	0.001	0.01	0.001	0.01	0.001
Max. Error fe	µm	10 ¹⁾	4	10 ¹⁾	5	20 ¹⁾	7
Repeatability	µm	2					
IP rating		IP51					
A	mm	56.7		69.9		121.3	
B	mm	66.1		78.5		142	
C	mm	50.5		50.5		88	
D	mm	36.6		49.4		-	
S_Connect : Proximity / Power		USB / RS232 / Wireless					
Programmable by PC		●					
Standard functions (customized by PC)		mm/inch, max 999.999), direction of measurement					

¹⁾ ± 1 digit

BASIC INSTRUMENT

MEASURING FORCE

		S 12.5	S 25	S 50
• Instrument according to technical specifications				
• Lithium battery CR2032 included				
• Instruction manual				
• Calibration certificate for instruments 0.001 mm				
Standard	N	0.65 - 0.90	0.65 - 1.15	1.4 - 2.9
Low ³⁾	N	0.4 - 0.55	0.45 - 0.9	---
High ³⁾	N	1.0 - 1.6	0.9 - 1.8	---

Tolerance ± 20%, spindle in outgoing measurement position.
³⁾ on request

B

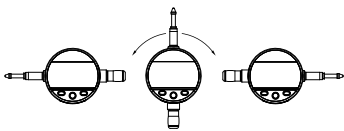
Digital indicators

S_Dial WORK

DESCRIPTION

ADVANCED

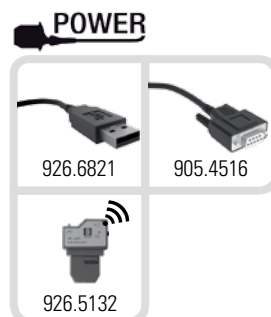
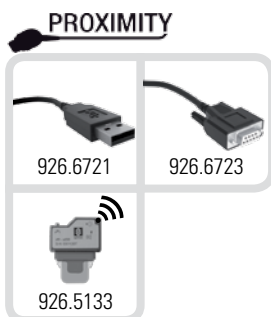
- Robust construction
- Water and coolant resistant
- New technology with configurable menus
- **Broad choice of functions (MIN/MAX/DELTA, TOL, Factor, PRESET, AUTO OFF, etc.)**
- Automatic wake-up and sleeping mode, **Absolute System S.I.S***
- **Maximum error of 3 µm**



SWISS MADE

SIS Smart Inductive System

WATER RESISTANT



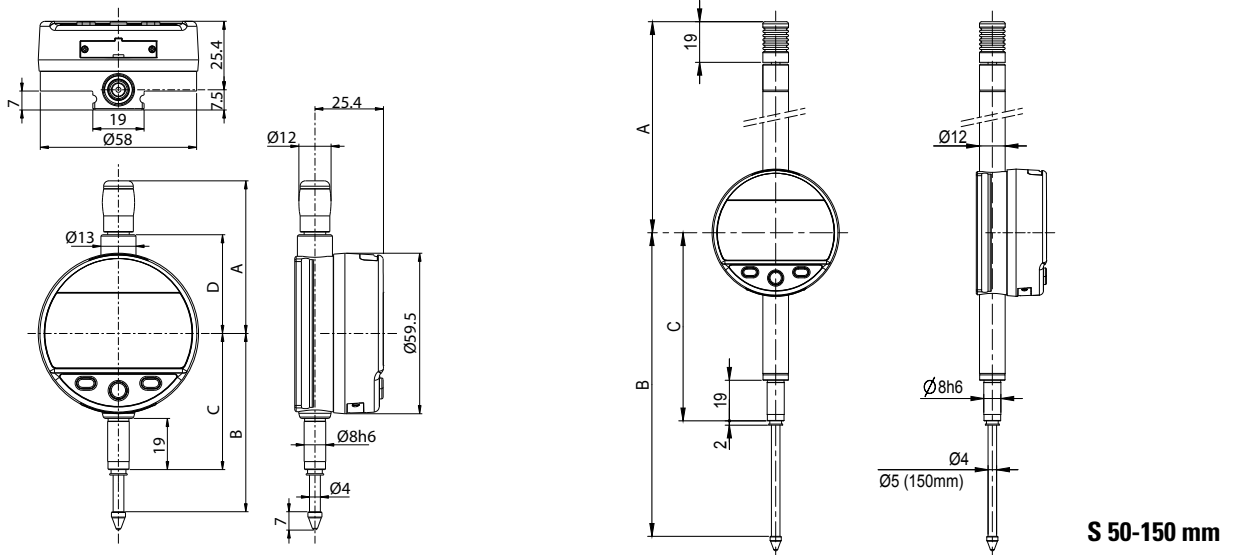
* SIS description on page 5

Digital indicators

S_Dial WORK

DIMENSIONAL DRAWINGS

ADVANCED



S 12.5-25 mm

S 50-150 mm

TECHNICAL SPECIFICATIONS

		805.5201	805.5301	805.5401	805.5501	805.5601	805.5621	805.5641	805.5661	805.5671	805.5681
Measuring range	mm	12.5	12.5	25	25	50	50	100	100	150	150
Resolution	mm	0.01	0.001	0.01	0.001	0.01	0.001	0.01	0.001	0.01	0.001
Max. Error fe	µm	10 ¹⁾	3	10 ¹⁾	4	20 ¹⁾	5	20 ¹⁾	6	20 ¹⁾	10
Repeatability	µm	2									
IP rating		IP54									
A	mm	56.7		69.4		121		172		224	
B	mm	66.1		78.5		142		244		349	
C	mm	50.5		50.5		88		139		193	
D	mm	36.6		49.4		-		-		-	
S_Connect : Proximity / Power		USB / RS232 / Wireless									
Programmable by PC		●									
Standard functions (customized by PC)		mm/inch, ref I/II, preset (max 999.999) min/max/delta, tolerances, resolution, direction of measurement, multiplication factor, automatic or manual switch off, key lock									

¹⁾ ± 1 digit

BASIC INSTRUMENT

MEASURING FORCE

		12.5	25	50	100	150
● Instrument according to technical specifications						
● Lithium battery CR2032 included						
● Instruction manual						
● Calibration certificate for instruments 0.001 mm						
Standard	N	0.65 - 0.9	0.65 - 1.15	1.4 - 2.9	1.8 - 3.8	2.6 - 5.7
Low ²⁾	N	0.4 - 0.55	0.45 - 0.9	---	---	---
High ²⁾	N	1.0 - 1.6	0.9 - 1.8	---	---	---

Tolerance ± 20%, spindle in outgoing measurement position.
²⁾ on request

B

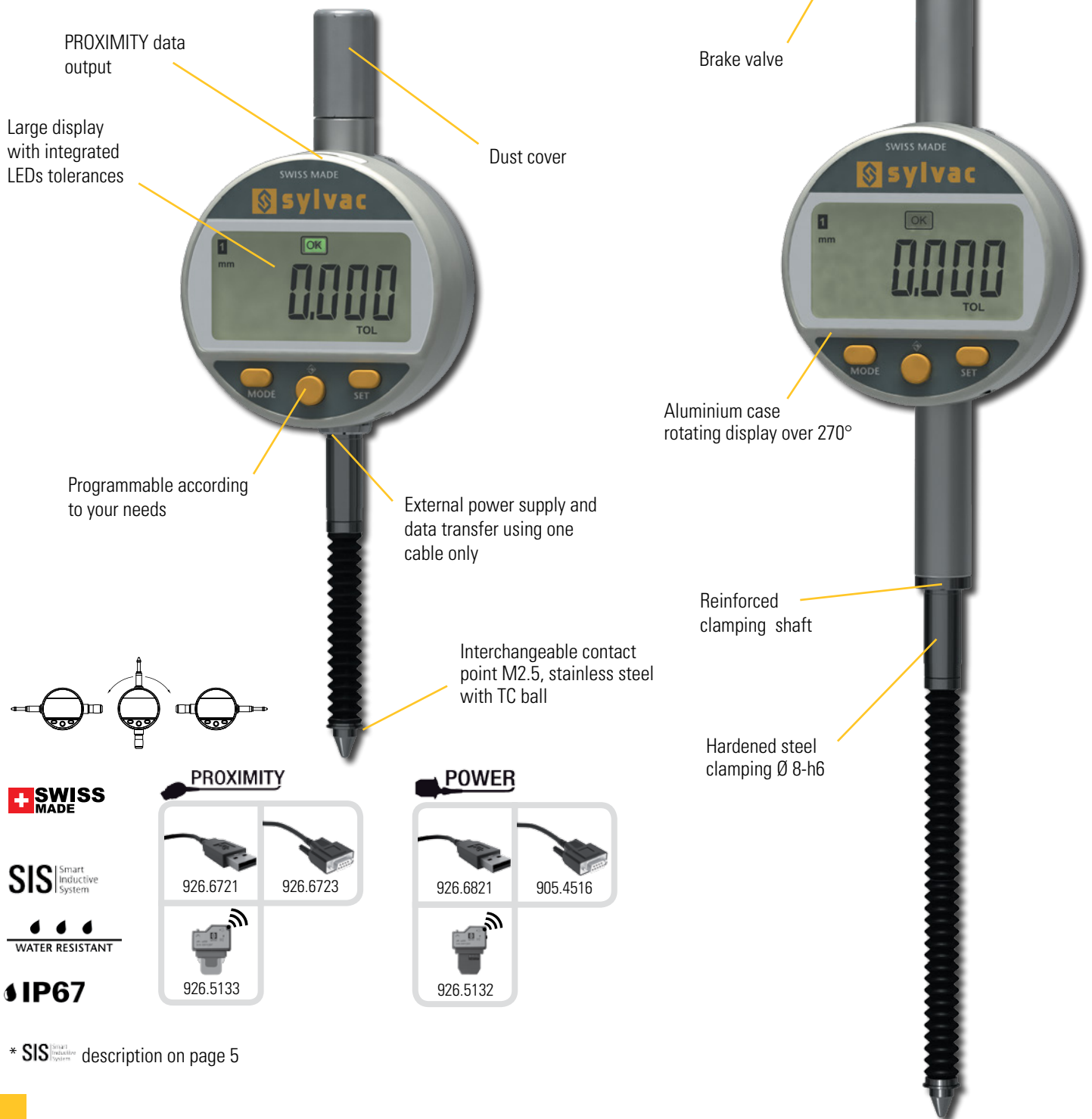
Digital indicators

S_Dial WORK

DESCRIPTION

ADVANCED IP67

- Robust construction
- Water and coolant resistant
- Protection rating IP67 according to IEC 60529, **even connected**
- New technology with configurable menus
- **Broad choice of functions (MIN/MAX/DELTA, TOL, Factor, PRESET, AUTO OFF, etc.)**
- Automatic wake-up and sleeping mode, **Absolute System S.I.S**
- **Maximum error of 3 µm**

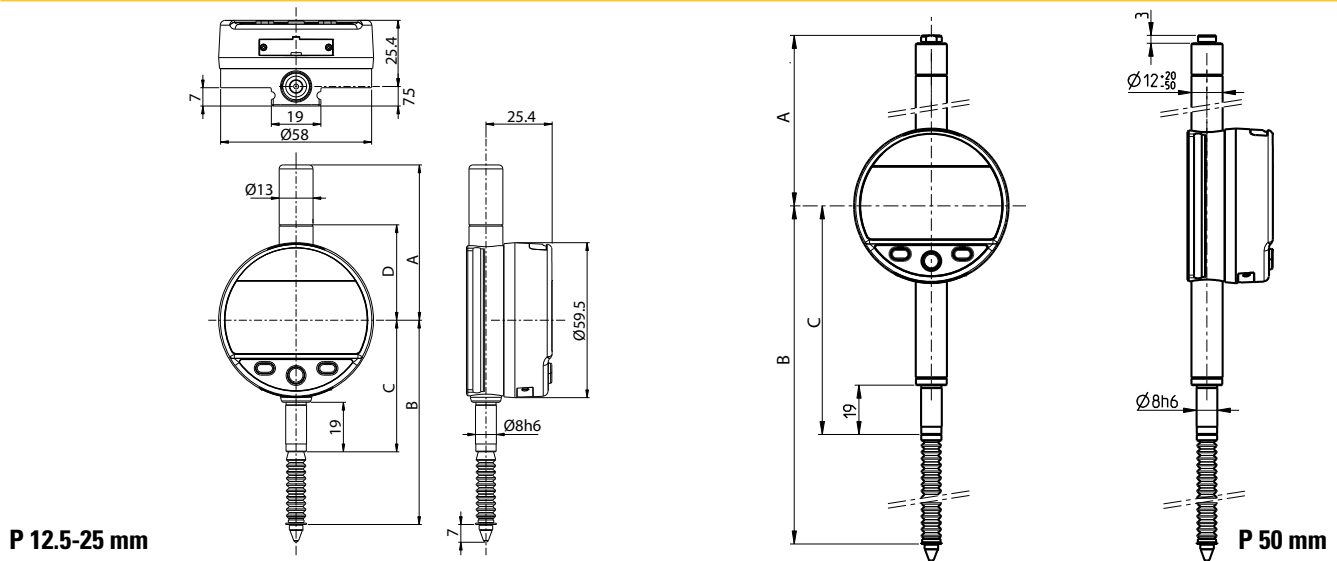


Digital indicators

S_Dial WORK

DIMENSIONAL DRAWINGS

ADVANCED IP67



TECHNICAL SPECIFICATIONS

		805.5305	805.5505	805.5625
Measuring range	mm	12.5	25	50
Resolution	mm	0.001	0.001	0.001
Max. Error fe	µm	3	4	5
Repeatability	µm		2	
IP rating			IP67	
A	mm	59.6	85.4	104.4
B	mm	78.4	99.7	175.3
C	mm	50.5	50.5	88
D	mm	36.6	49.4	-
S_Connect : Proximity / Power		USB / RS232 / Wireless		
Programmable by PC		●		
Standard functions (customized by PC)		mm/inch, ref I/II, preset (max 999.999) min/max/delta, tolerances, resolution, direction of measurement, multiplication factor, automatic or manual switch off, key lock		

BASIC INSTRUMENT

MEASURING FORCE

		P 12.5	P 25	P 50	
● Instrument according to technical specifications					
● Lithium battery CR2032 included					
● Instruction manual					
● Calibration certificate for instruments 0.001 mm					
	Standard	N	0.7 – 1.4	0.65 – 1.8	0.9 – 2.8
	Low ²⁾	N	---	---	---
	High ²⁾	N	---	---	---

Tolerance ± 20%, spindle in outgoing measurement position.
²⁾ on request

Digital indicators

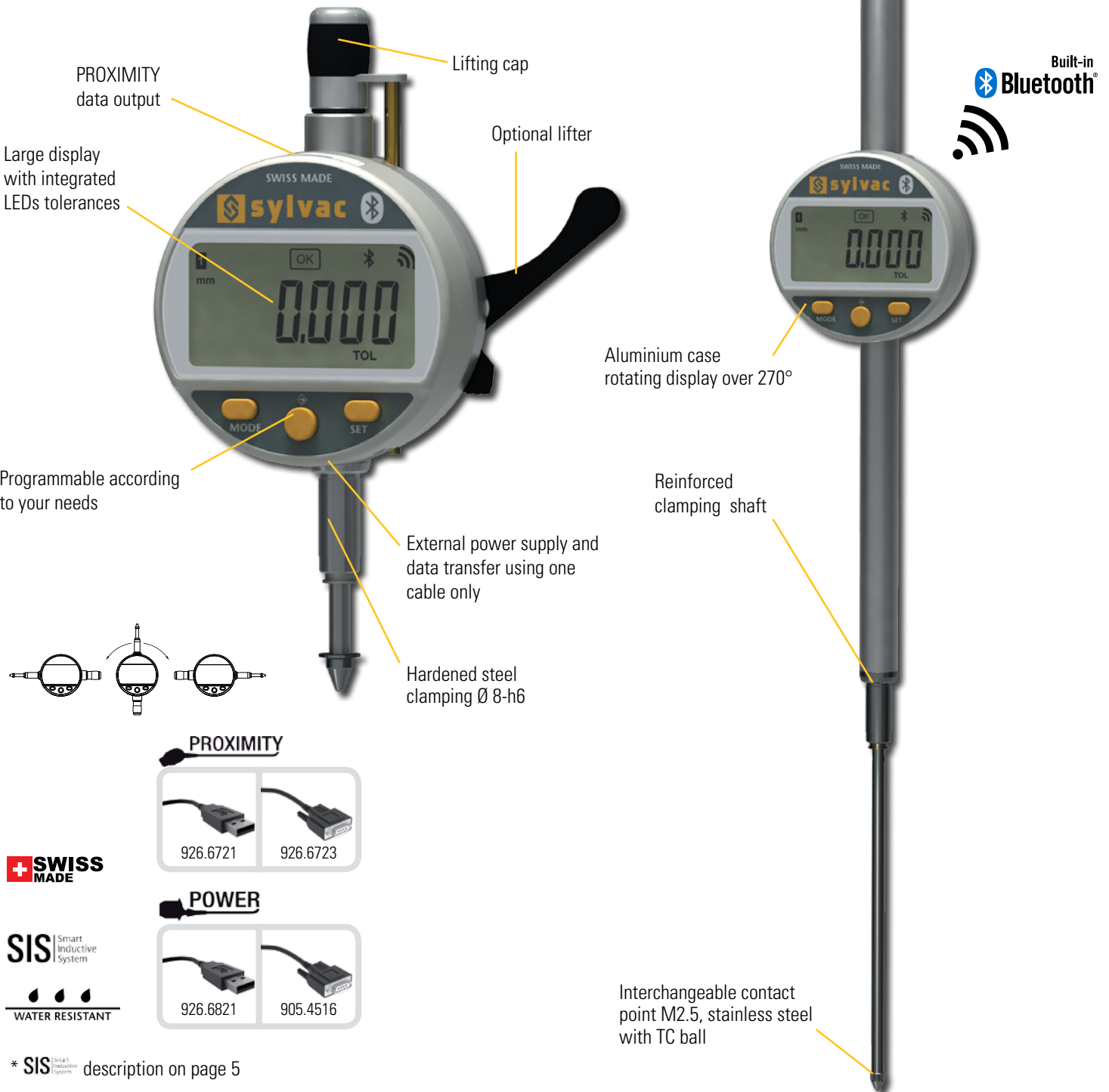
S_Dial WORK

DESCRIPTION

BLUETOOTH® SMART

- **Integrated Bluetooth® technology**
- Robust construction
- Water and coolant resistant
- New technology with configurable menus
- **Broad choice of functions (MIN/MAX/DELTA, TOL, Factor, PRESET, AUTO OFF, etc.)**
- Automatic wake-up and sleeping mode, **Absolute System S.I.S***
- **Maximum error of 3 µm**

B



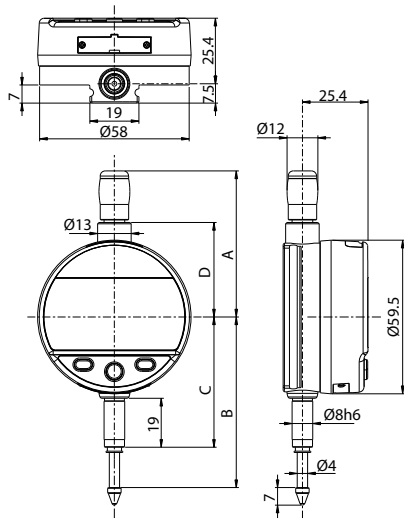
* SIS description on page 5

Digital indicators

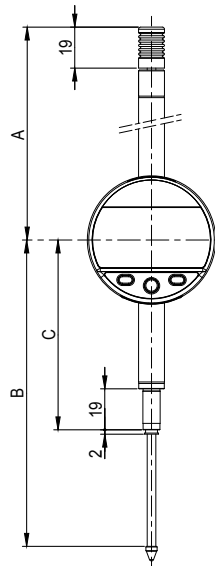
S_Dial WORK

DIMENSIONAL DRAWINGS

BLUETOOTH® SMART



S 12.5 - 25



S 50 - 100

TECHNICAL SPECIFICATIONS

		805.6301	805.6501	805.6621	805.6661
Measuring range	mm	12.5	25	50	100
Resolution	mm	0.001	0.001	0.001	0.001
Max. Error fe	µm	3	4	5	6
Repeatability	µm	2			
IP rating		IP54			
A	mm	56.7	69.4	121	172
B	mm	66.1	78.5	142	244
C	mm	50.5	50.5	88	139
D	mm	36.6	49.4	-	-
S_Connect : Proximity / Power		USB / RS232 / Bluetooth® wireless technology*			
Programmable by PC		●			
Standard functions (customized by PC)		mm/inch, ref I/II, preset (max 999.999) min/max/delta, tolerances, resolution, direction of measurement, multiplication factor, automatic or manual switch off, key lock			

¹⁾ ± 1 digit

*** Up to 8 instruments connected per dongle #981.7100**
More informations on How to use Bluetooth® leaflet SYL_1401_EN_BT

BASIC INSTRUMENT

MEASURING FORCE

- Instrument according to technical specifications
- Lithium battery CR2032 included
- Instruction manual
- Calibration certificate for instruments 0.001 mm

		12.5	25	50	100
Standard	N	0.65 - 0.90	0.65 - 1.15	1.4 - 2.9	1.8 - 3.8
Low ²⁾	N	0.4 - 0.55	0.45 - 0.9	---	---
High ²⁾	N	1.0 - 1.6	0.9 - 1.8	---	---

Tolerance ± 20%, spindle in outgoing measurement position.
²⁾ on request

B

Digital indicators

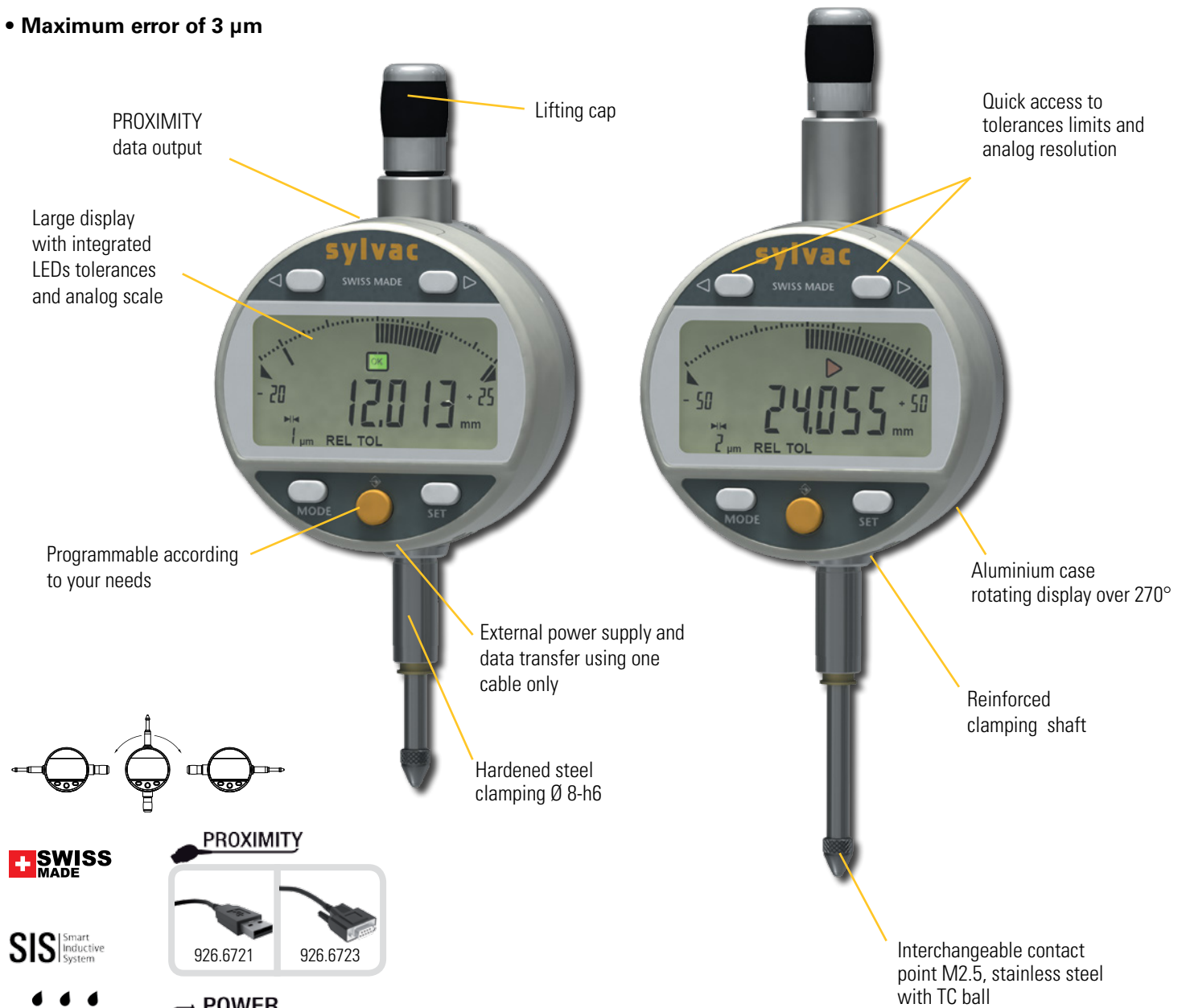
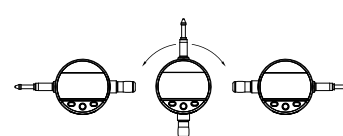
S_Dial WORK

DESCRIPTION



ANALOG

- **Adaptive analog display (up to 0.2 µm per segment)**
- Robust construction
- Water and coolant resistant
- New technology with configurable menus
- **Broad choice of functions (MIN/MAX/DELTA, TOL, Factor, PRESET, AUTO OFF, etc.)**
- Automatic wake-up and sleeping mode, **Absolute System S.I.S***
- **Maximum error of 3 µm**



B

PROXIMITY

	
926.6721	926.6723

POWER

	
926.6821	905.4516

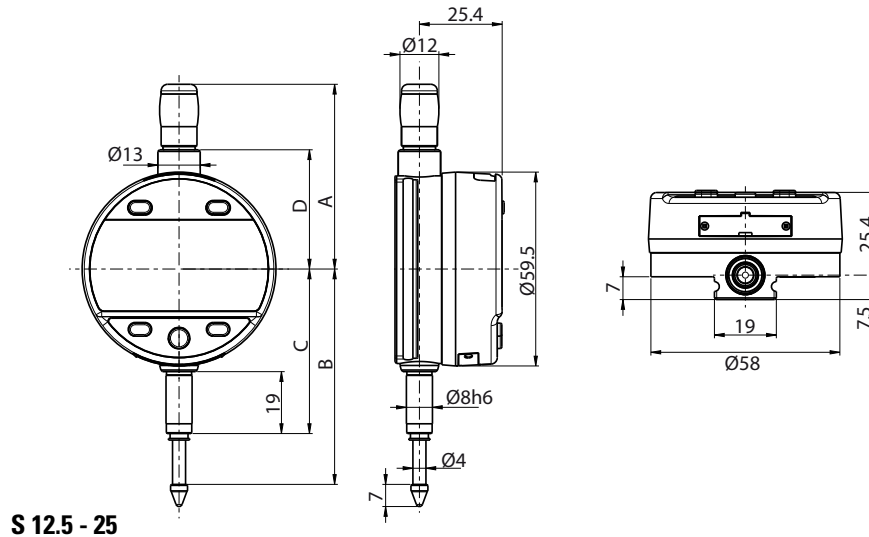
* SIS description on page 5

Digital indicators

S_Dial WORK

DIMENSIONAL DRAWINGS

ANALOG



TECHNICAL SPECIFICATIONS

		805.5307	805.5507
Measuring range	mm	12.5	25
Resolution	mm	0.001	
Max. Error fe	µm	3	4
Repeatability	µm	2	
IP rating		IP54	
A	mm	56.7	69.4
B	mm	66.1	78.5
C	mm	50.5	50.5
D	mm	36.6	49.4
S_Connect : Proximity / Power		USB / RS232	
Programmable by PC		●	
Standard functions (customized by PC)		mm/inch, preset (max 999.999) min/max/delta, tolerances, resolution, direction of measurement, multiplication factor, automatic or manual switch off, key lock	

¹⁾ ± 1 digit

BASIC INSTRUMENT

MEASURING FORCE

- Instrument according to technical specifications
- Lithium battery CR2032 included
- Instruction manual
- Calibration certificate

		S 12.5	S 25
Standard	N	0.65 - 0.90	0.65 - 1.15
Low ²⁾	N	0.4 - 0.55	0.45 - 0.9
High ²⁾	N	1.0 - 1.6	0.9 - 1.8

Tolerance ± 20%, spindle in outgoing measurement position.

²⁾ on request

B

Digital indicators

S_Dial WORK

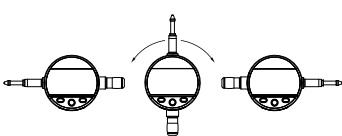
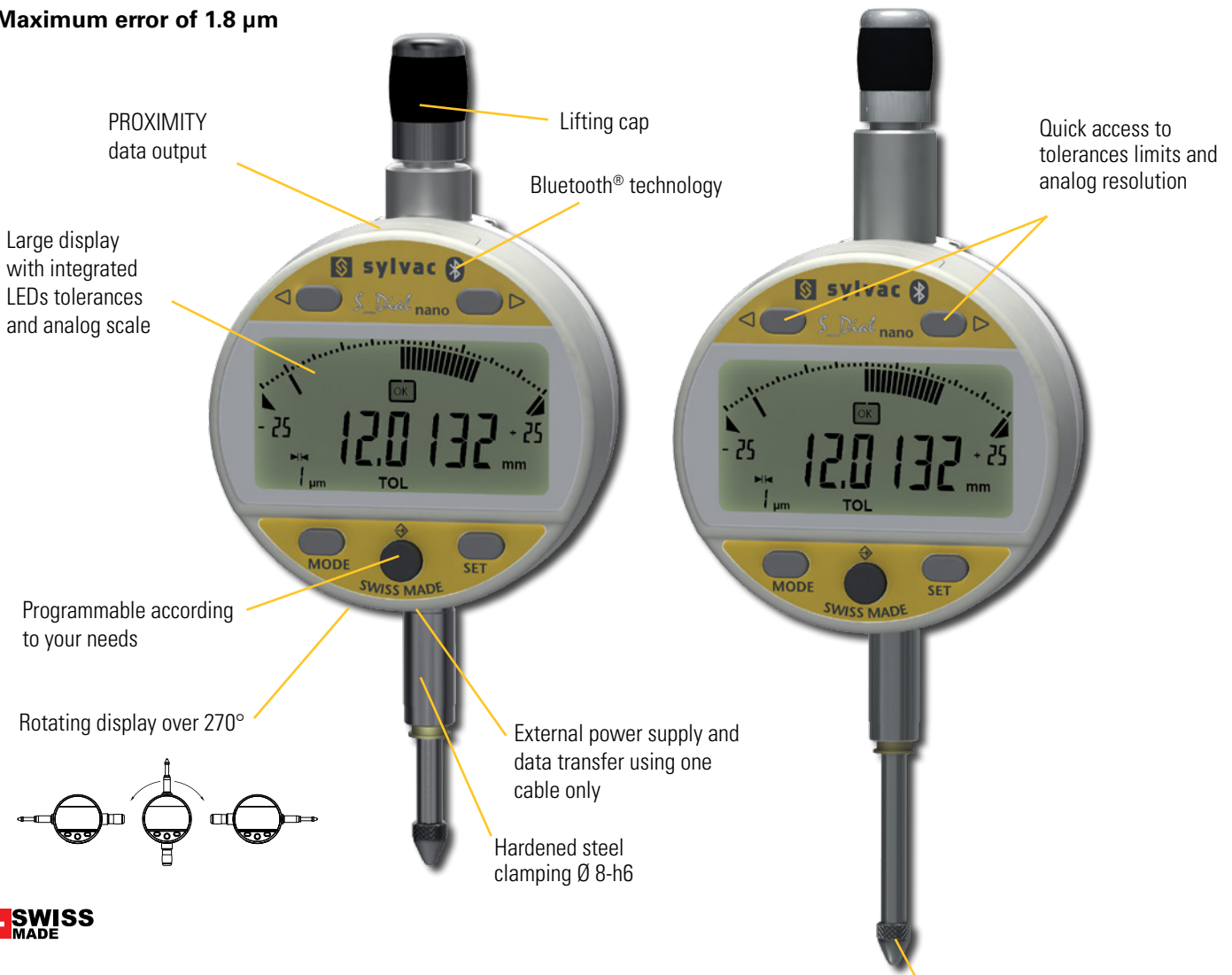
DESCRIPTION

ANALOG NANO BLUETOOTH®

- **Integrated Bluetooth® technology**
- Adaptive analog display (up to 0.1 µm per segment)
- **0,1 µm resolution**
- Robust construction
- Water and coolant resistant
- New technology with configurable menus
- **Broad choice of functions (MIN/MAX/DELTA, TOL, Factor, PRESET, AUTO OFF, etc.)**
- Automatic wake-up and sleeping mode, **Absolute System S.I.S***
- **Maximum error of 1.8 µm**

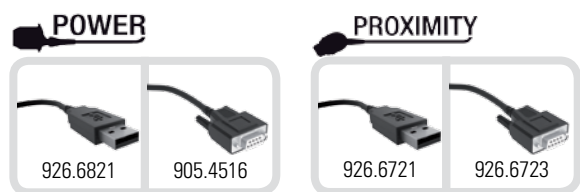


B



SWISS MADE

SIS Smart Inductive System
WATER RESISTANT



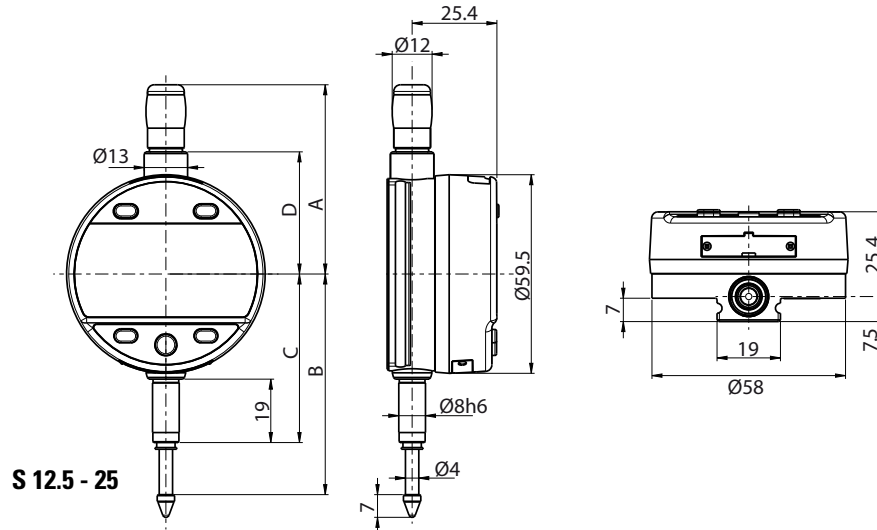
* SIS description on page 5

Digital indicators

S_Dial WORK

DIMENSIONAL DRAWINGS

ANALOG NANO BLUETOOTH®



TECHNICAL SPECIFICATIONS

		805.6307	805.6507
Measuring range	mm	12.5	25
Resolution	mm	0.0001	
Max. Error fe	µm	1.8	2.2
Repeatability	µm	0.5	
IP rating		IP54	
A	mm	56.7	69.4
B	mm	66.1	78.5
C	mm	50.5	50.5
D	mm	36.6	49.4
S_Connect : Proximity / Power		USB / RS232 / Bluetooth® wireless technology*	
Programmable by PC		●	
Standard functions (customized by PC)		mm/inch, preset (max 99.9999 or 999.999) min/max/delta, tolerances, resolution, direction of measurement, multiplication factor, automatic or manual switch off, key lock	

*** Up to 8 instruments connected per dongle #981.7100**
More informations on How to use Bluetooth® leaflet SYL_1401_EN_BT

BASIC INSTRUMENT

MEASURING FORCE

- Instrument according to technical specifications
- Lithium battery CR2032 included
- Instruction manual
- Calibration certificate

		S 12.5	S 25
Standard	N	0.65 - 0.90	0.65 - 1.15
Low ²⁾	N	0.4 - 0.55	0.45 - 0.9
High ²⁾	N	1.0 - 1.6	0.9 - 1.8

Tolerance ± 20%, spindle in outgoing measurement position.
²⁾ on request

B

Digital indicators

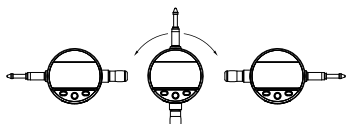
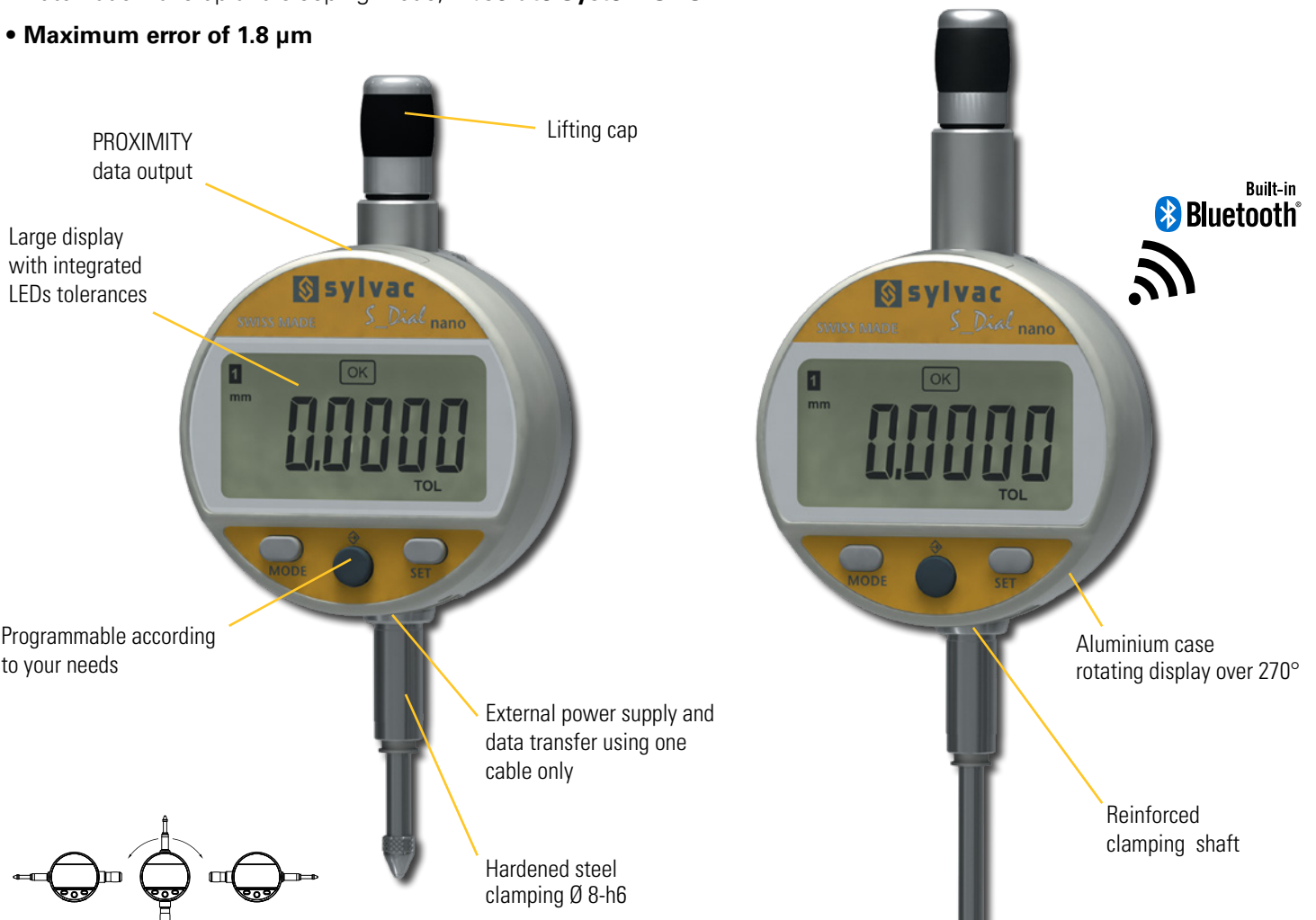
S_Dial WORK

DESCRIPTION

NANO & NANO BLUETOOTH®

- **0,1 µm resolution**
- Robust construction
- Water and coolant resistant
- New technology with configurable menus
- **Broad choice of functions (MIN/MAX/DELTA, TOL, Factor, PRESET, AUTO OFF, etc.)**
- Automatic wake-up and sleeping mode, **Absolute System S.I.S***
- **Maximum error of 1.8 µm**

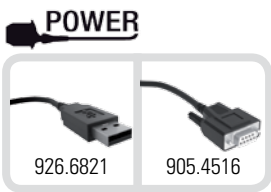
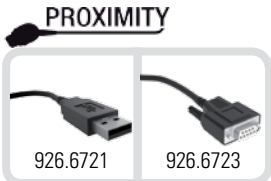
B



SWISS MADE

SIS Smart Inductive System

WATER RESISTANT



Interchangeable contact point M2.5, stainless steel with TC ball

Max error 1.8 µm
Repeatability 0,5 µm

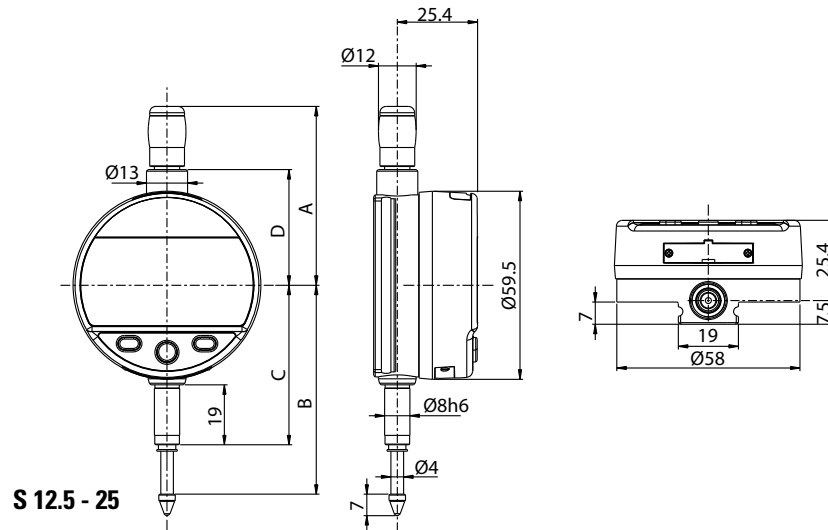
* SIS description on page 5

Digital indicators

S_Dial WORK

DIMENSIONAL DRAWINGS

NANO & NANO BLUETOOTH®



TECHNICAL SPECIFICATIONS

		805.5306	805.5506	805.6306	805.6506
Measuring range	mm	12.5	25	12.5	25
Resolution	mm	0.0001	0.0001	0.0001	0.0001
Max. Error fe	µm	1.8	2.2	1.8	2.2
Repeatability	µm	0.5			
IP rating		IP54			
A	mm	56.7	69.4	56.7	69.4
B	mm	66.1	78.5	66.1	78.5
C	mm	50.5	50.5	50.5	50.5
D	mm	36.6	49.4	36.6	49.4
S_Connect : Proximity / Power		USB / RS232		USB / RS232 / Bluetooth® wireless technology*	
Programmable by PC		●			
Standard functions (customized by PC)		mm/inch, ref I/II, preset (max 999.999) min/max/delta, tolerances, resolution, direction of measurement, multiplication factor, automatic or manual switch off, key lock			

*** Up to 8 instruments connected per dongle #981.7100**
More informations on How to use Bluetooth® leaflet SYL_1401_EN_BT

BASIC INSTRUMENT

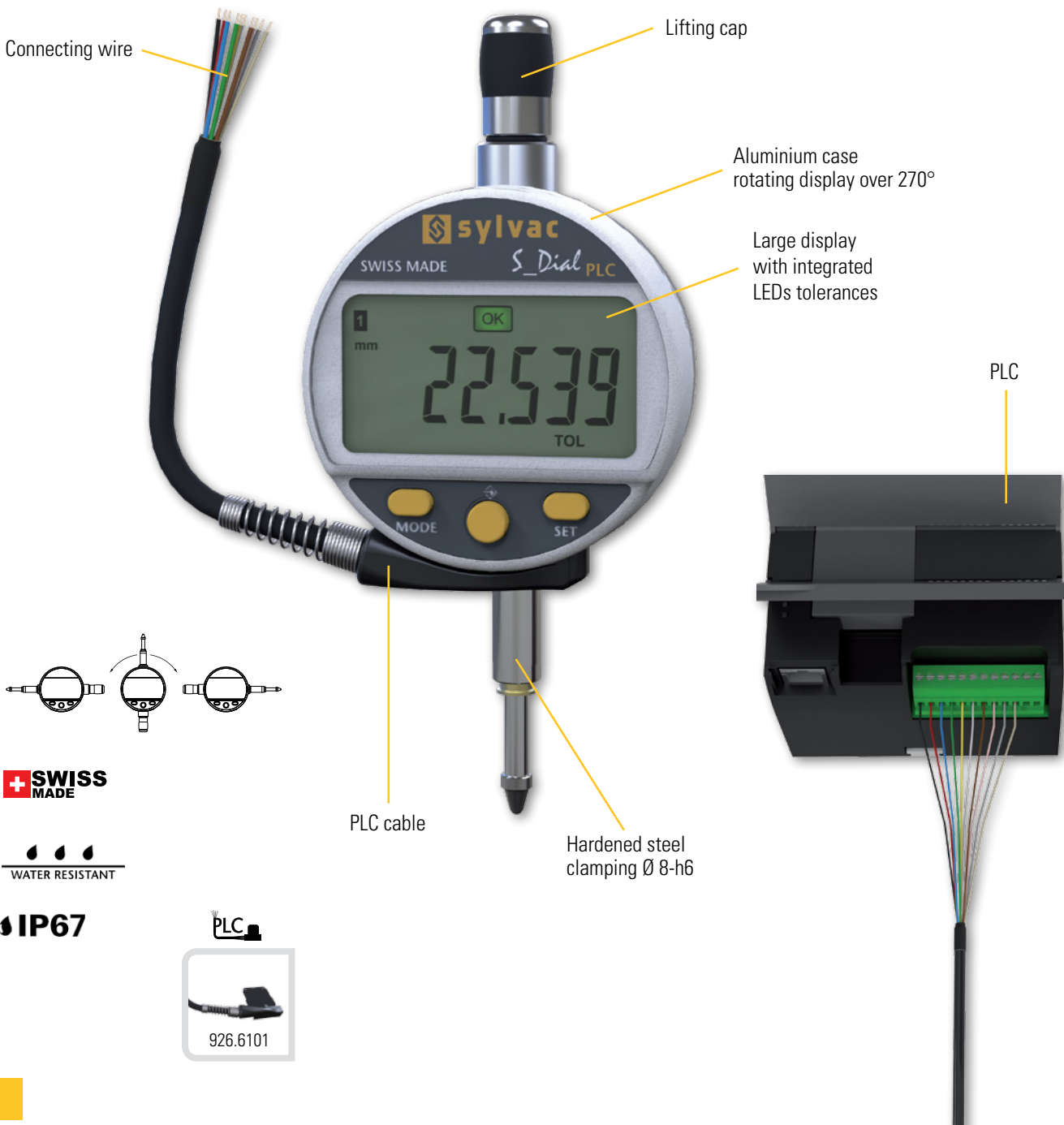
MEASURING FORCE

		S 12.5	S 25
• Instrument according to technical specifications			
• Lithium battery CR2032 included			
• Instruction manual			
• Calibration certificate			
Standard	N	0.65 - 0.90	0.65 - 1.15
Low ²⁾	N	0.4 - 0.55	0.45 - 0.9
High ²⁾	N	1.0 - 1.6	0.9 - 1.8

Tolerance ± 20%, spindle in outgoing measurement position.
²⁾ on request

B

- **Indicator with PLC connector**
- Resolution up to 0.001mm
- Robust construction
- Water and coolant resistant
- New technology with configurable menus
- **Broad choice of functions (MIN/MAX/DELTA, TOL, Factor, PRESET, etc.)**
- Maximum error up to 4 µm
- Compatible with the following protocols : MODBUS / ASCII / ORBIT

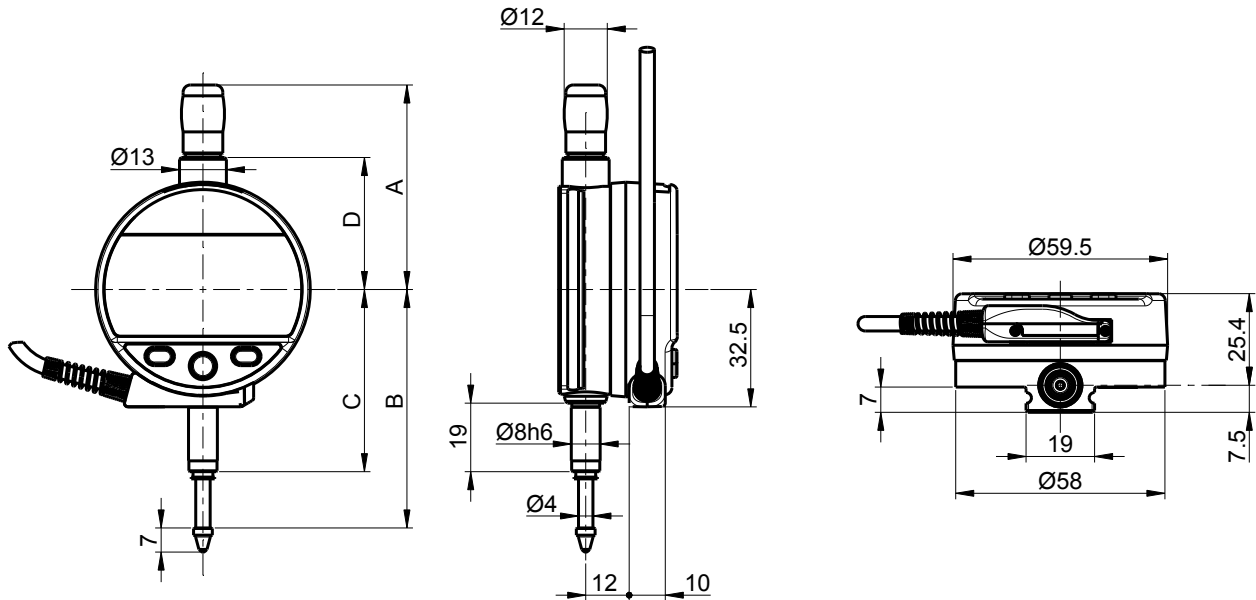


Digital indicators

S_Dial WORK

DIMENSIONAL DRAWINGS

PLC



TECHNICALS SPECIFICATIONS

		805.7301	805.7201	805.7501	805.7401
Measuring range	mm	12.5	12.5	25	25
A	mm	56.7		69.4	
B	mm	66.1		78.5	
C	mm	50.5		50.5	
D	mm	36.6		49.4	
Resolution	mm	0.001	0.01	0.001	0.01
Max. Error fe	µm	4	10	5	10
Repeatability	µm	2			
S_Connect		PLC cable / RS232 (Proximity) and RS485 (cable) compatible			
Data bus		RS485 compatible / Charge 1/256 (Protocole MODBUS, ASCII or ORBIT)			
Measuring force	N	0.65 - 0.9		0.65 - 1.15	
IP rating		IP67	IP54	IP67	IP54
Clamping		Ø8h6, interchangeable anvil probe M2.5			
Standard functions (customizable by PC)		mm/inch, ref I/II, preset (max 999.999) min/max/delta, tolerances, resolution, measuring direction, multiplier, keylock			

INSTRUMENT DE BASE

- Instrument according to technical specifications
- PLC cable included
- Manual
- Calibration certificate

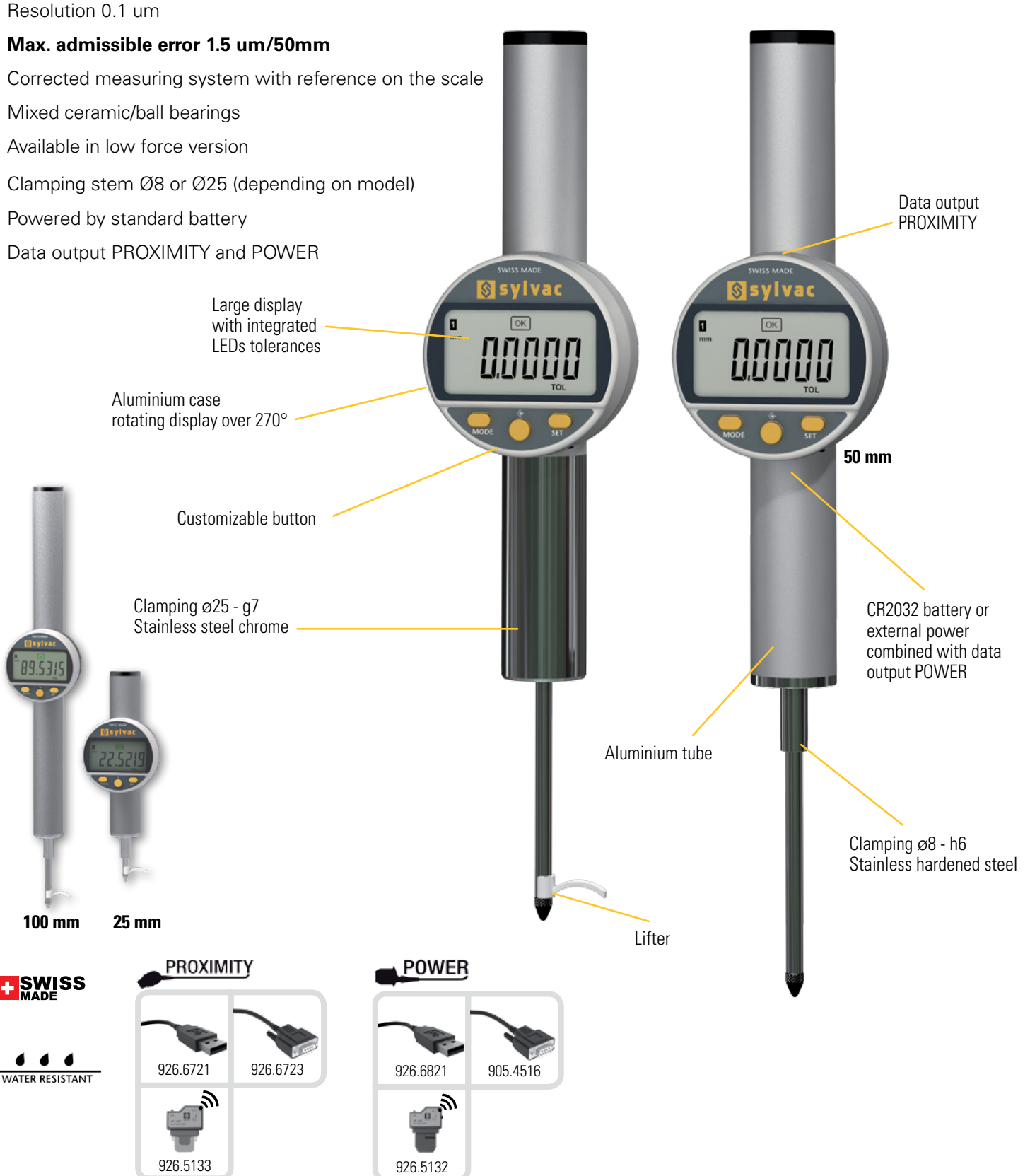
Digital indicators

S_Dial PRO

DESCRIPTION

BASIC

- High accuracy indicators allowing to measure on long range without calibration
- Broad choice of functions (MIN/MAX/DELTA, TOL, Factor, PRESET, AUTO OFF, etc)
- Resolution 0.1 μm
- **Max. admissible error 1.5 $\mu\text{m}/50\text{mm}$**
- Corrected measuring system with reference on the scale
- Mixed ceramic/ball bearings
- Available in low force version
- Clamping stem $\varnothing 8$ or $\varnothing 25$ (depending on model)
- Powered by standard battery
- Data output PROXIMITY and POWER

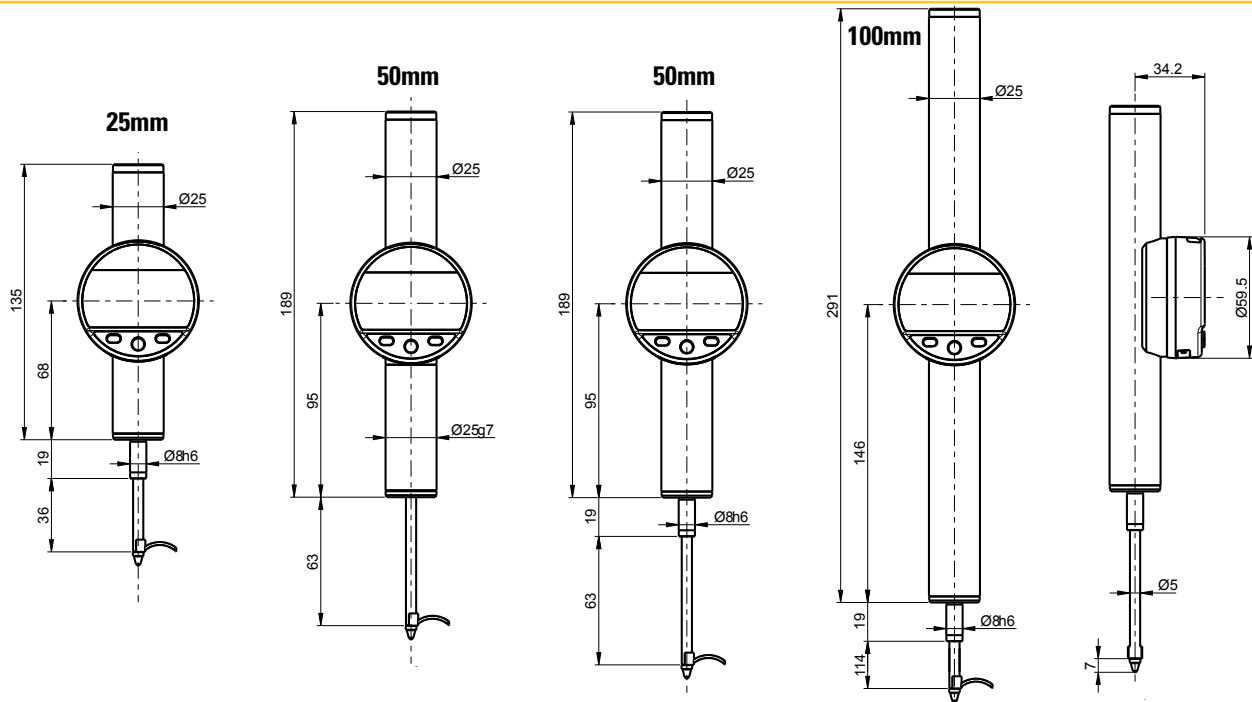


Digital indicators

S_Dial PRO

DIMENSIONAL DRAWINGS

BASIC



TECHNICALS SPECIFICATIONS

		805.8501	805.8502	805.8601	805.8701	805.8602	805.8702	805.8661
Measuring range	mm	25		50			100	
Resolution	mm	0.0001						
Max. Error fe	µm	1.3		1.5			2.2	
Repeatability	µm	0.2						
S_Connect : Proximity /Power		USB / RS232						
Programmable by PC		●						
Clamping		ø8 h6			ø25 g7		ø8 h6	
Spring		●	¹⁾	●	¹⁾	●	¹⁾	●
Measuring force	N	0.75 - 1.00 ²⁾	0.30 ²⁾	0.85 - 1.2 ²⁾	0.40 ²⁾	0.85 - 1.2 ²⁾	0.40 ²⁾	0.90 - 1.30 ²⁾
IP rating		IP51						
Standard functions (customizable by PC)		mm/inch, ref I/II, preset (max 99.9999) min/max/delta, tolerances, resolution, measuring direction, multiplier, automatic extinction/manual, keylock						

¹⁾ Model without spring : Constant measuring force, use only in a vertical position

²⁾ The values agree within ± 20% (vertical down, measuring rod outgoing)

INSTRUMENT DE BASE

- Instrument according to technical specifications
- Lithium battery CR2032 included
- Lifter included
- Manual
- Calibration certificate

B

APPLICATIONS

B



Measurement of a span with S_Dial WORK equipped with measuring ball probe 905.2207



S_Dial WORK Analog measuring with bore gauge system



S_Dial WORK mounted on a Sylvac PS15 bench



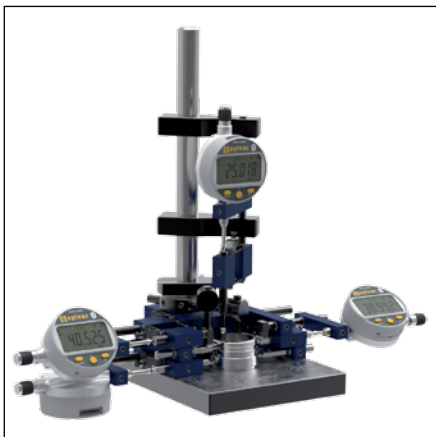
S_Dial WORK BLUETOOTH SMART working in duplex mode and connected to D300S to measure concentricity, roundness, etc.



S_Dial WORK PLC connected to a PLC



S_Dial WORK Analog used on bore gauge system



Bluetooth® indicators on a 4 points jig



Bluetooth® indicators on an iPad through the Sylvac BT Smart App



S_Dial PRO on ceramic stand

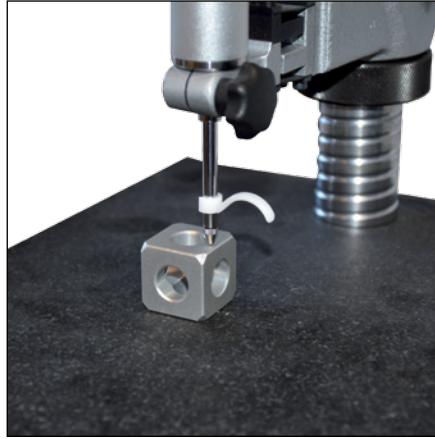
Digital indicators

S_Dial

LIFTING DEVICES



Lower lifting lever, type 905.4214



Lifting device on S_Dial PRO Basic



Upper lifting device type 905.4215



Pneumatic lifting device type 905.2218



Vacuum lifting device type 905.2220



Lifting device with photo-cable type 905.2216



Lifting device type 905.2214



Lifting device on S_Dial WORK BT

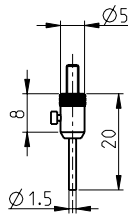
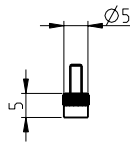
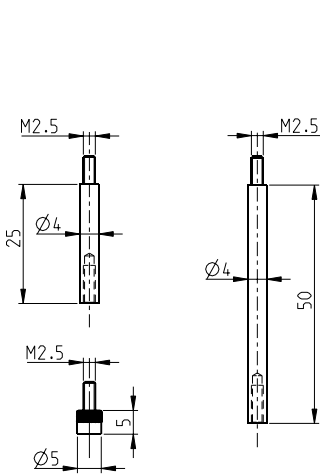


Upper lifting lever type, 905.2215

ACCESSORIES

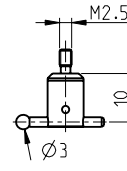
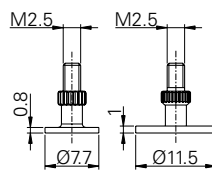
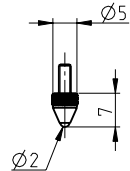
Contact points M2.5

B

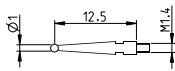


S233
S234 (905.4321)
S234 (905.4322)
S_Dial WORK
12,5 - 25 mm
S_Dial WORK
50 - 150 mm
S_Dial PRO Basic

905.2201	905.2202	905.2203	•			•	•	•
-----------------	-----------------	-----------------	---	--	--	---	---	---

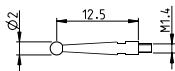


905.2206	905.2204	905.2205	905.2207	•			•	•	•
-----------------	-----------------	-----------------	-----------------	---	--	--	---	---	---



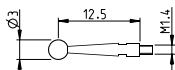
905.2240 Short probe, TC ball

			•					
--	--	--	---	--	--	--	--	--



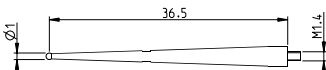
905.2241 Short standard probe, TC ball

			•					
--	--	--	---	--	--	--	--	--



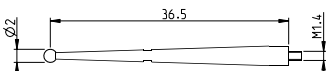
905.2242 Short probe, TC ball

			•					
--	--	--	---	--	--	--	--	--



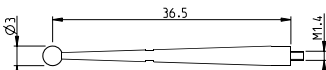
905.2243 Long probe, TC ball

				•				
--	--	--	--	---	--	--	--	--



905.2244 Long standard probe, TC ball

					•			
--	--	--	--	--	---	--	--	--



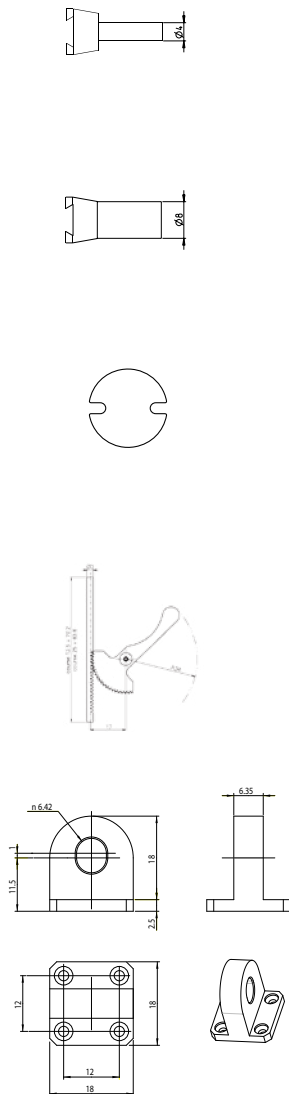
905.2245 Long probe, TC ball

						•		
--	--	--	--	--	--	---	--	--

Digital indicators

S_Dial

ACCESSORIES

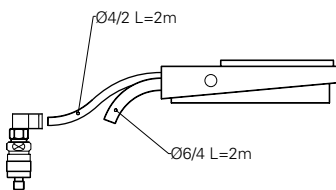
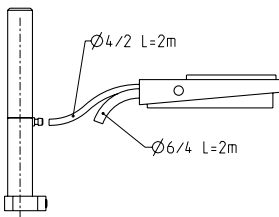
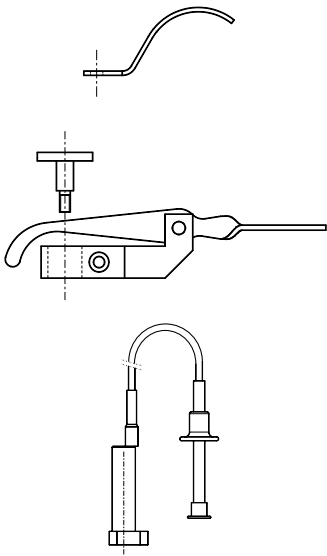


		S233	S234	S_Dial WORK 12,5 - 25 mm	S_Dial WORK 50 - 150 mm
905.2246	Clamping stem	•	•		
905.2247	Clamping stem	•	•		
905.2248	Spanner for probe		•		
805.0214	Lifting device, range 12.5mm			• ¹⁾	
805.0215	Lifting device, range 25mm			• ¹⁾	
805.0213	Lug back			• ¹⁾	• ¹⁾
905.2231	Sleeve Ø8 --> 10mm with locking screw	•	•	•	•
905.4212	Screwdriver for S233 & S234	•	•		

¹⁾ Except S_Dial WORK Basic

ACCESSORIES

B

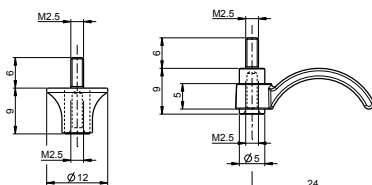
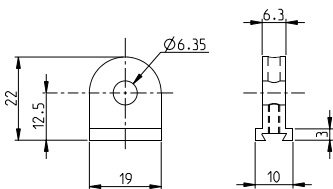
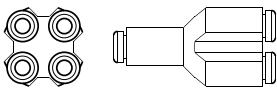
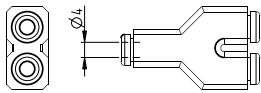
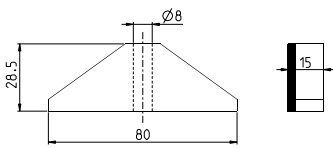
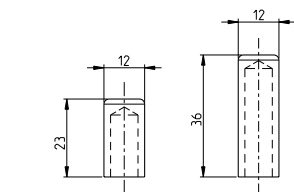


		S233	S234	S_Dial WORK 12,5 - 25 mm	S_Dial WORK 50 - 150 mm	S_Dial PRO Basic
905.2214	Lifting device	•		•	•	•
905.2215	Upper lifting device			•		
905.2216	Lifting device with photo-cable			•		
905.2218	Pneumatic lifting device with foot pedal			•		
905.2217	Lifter only for 905.2218			•		
905.2219	Pneumatic foot pedal for 905.2218	•		•		
905.2220	Vacuum lifting device with foot pedal				•	
905.2227	Pressure controller				•	
905.2228	Vacuum foot pedal for 905.2220				•	

Digital indicators

S_Dial

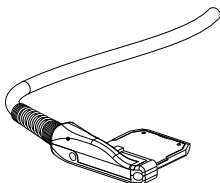
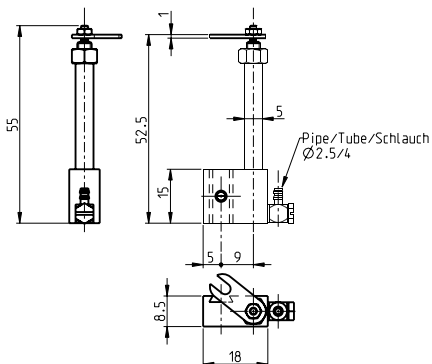
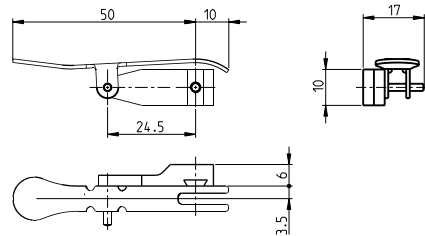
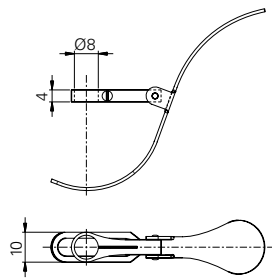
ACCESSORIES



		S233	S234	S_Dial WORK 12,5 - 25 mm	S_Dial WORK 50 - 150 mm	S_Dial PRO Basic
905.2221	Dust protection for indicator, range 12.5 mm			•		
905.2222	Dust protection for indicator, range 25 mm			•		
905.2223	Depth measuring base			•	•	
905.2261	Snap connector for pneumatic lifter x2	•		•	•	
905.2262	Snap connector for pneumatic lifter x4	•		•	•	
905.4211	Center lug back	•	•			
905.2224	Plastic lifting lever (bottom)	•		•	•	•
905.2225	Plastic lifting ring (bottom)	•		•	•	•

ACCESSORIES

B



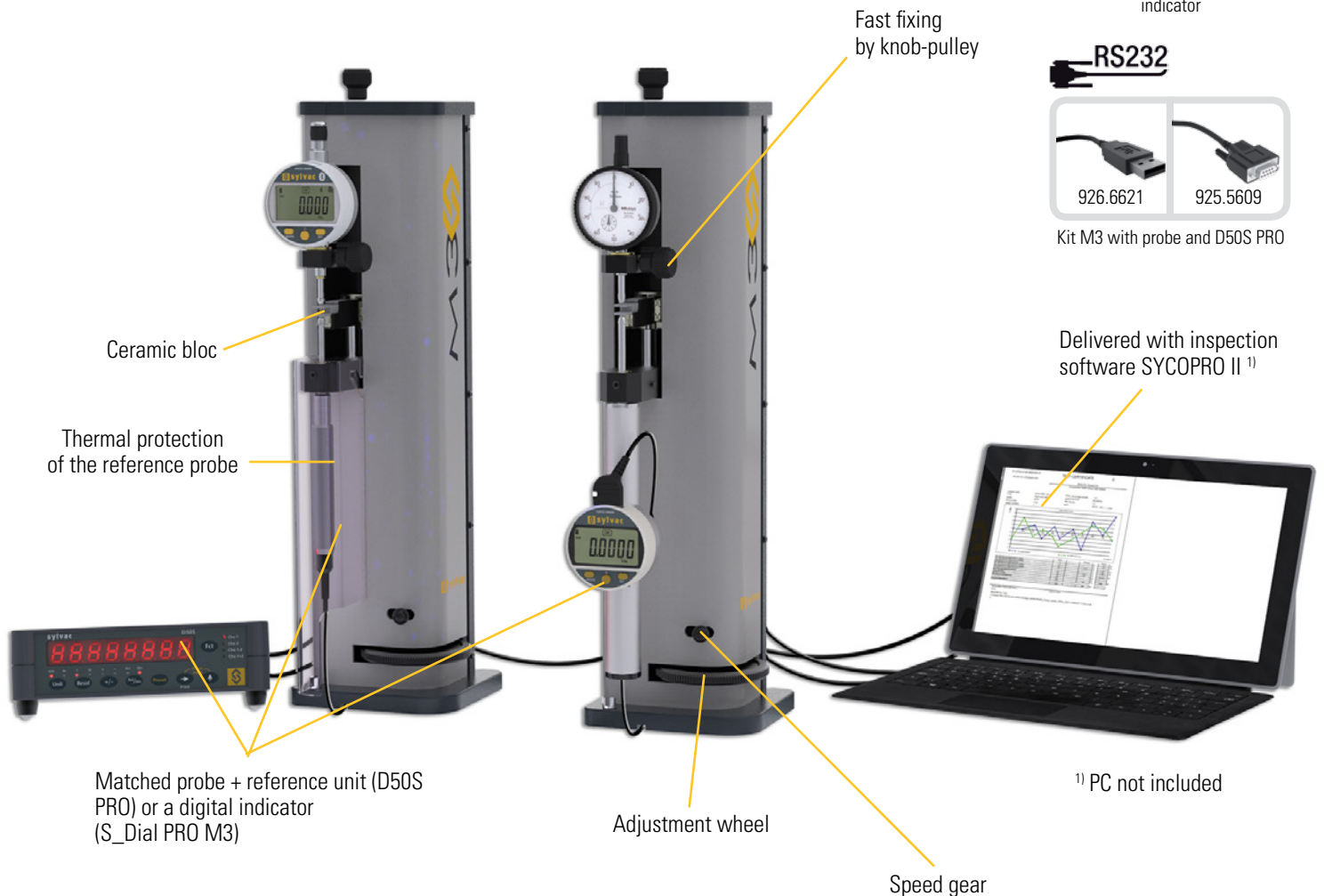
		S233	S234	S_Dial WORK 12,5 - 25 mm	S_Dial WORK 50 - 150 mm	S_Dial WORK PLC
905.4214	Lower lifting device, range 12.5 mm	●	1)	1)	1)	1)
905.4215	Upper lifting device for S (Standard) execution, except vertical type	●				
905.4217	Pneumatic lifting device for standard type	●				
926.6101	Replacement cable for digital indicator PLC					●

¹⁾ used on range 20 mm max

Digital indicator testing stand M3

DESCRIPTION

- Control thanks to a probe 10mm, 25mm or a digital indicator 25mm, 50mm
- Suitable for testing dial gauges plunger type and test indicators
- Allows the use of 2 calibrated measuring probes (like P25 and P25) (P10 calibrated on channel 1 and P50 calibrated on channel 2) (version D50S PRO)
- Testing system according to ABBE principle
- Can be used in vertical and horizontal position
- Ceramic gauges blocs
- Direct status from the instrument during checking
- Integrated standards
- Creation of personalized certificates of inspection
- Fast and slow approach speeds
- Visualization at any time of the control status
- Control of digital instruments with direct connection

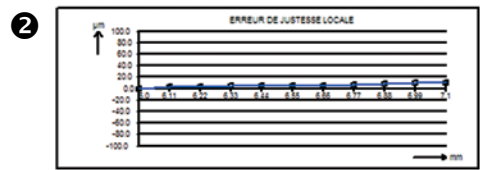
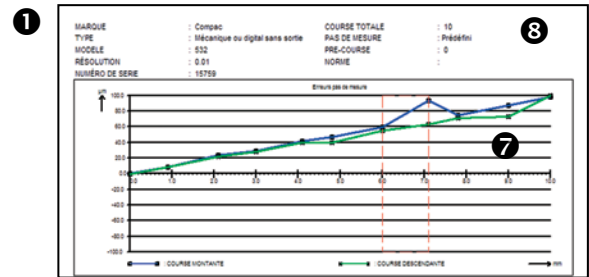


B

Digital indicator testing stand M3

DISPLAY/SOFTWARE

- 1 Display the curves of measurement
- 2 Check the error and repeatability
- 3 Creation and management of instrument groups
- 4 Fast access to all of stored instruments
- 5 Integrated standards
- 6 Personalisation of the standards
- 7 Display the measured values
- 8 Possibility to customize the certificate



The software interface includes several key components:

- 5 Normes (Standards):** A list of standards such as DIN 2270, DIN 882, and NF E 11-050.
- 6 Nouvelle norme (New Standard):** Configuration options for 'Erreur justesse' (Accuracy Error) and 'Erreur de fidélité' (Fidelity Error), including settings for 'Montante & descendant', 'Erreur de justesse locale algébrique', and 'Précédents'.
- 3 Instrument:** A window showing a list of instruments grouped under 'LABORATORY', including 'Digital Caliper Sylvac 150mm', 'Digital indicator Sylvac 12.5mm - 0.01', etc.
- 4 Instrument:** A window showing a list of instruments grouped under 'LABORATORY', including 'Digital Caliper Sylvac 150mm', 'Digital indicator Sylvac 12.5mm - 0.01', etc.

TECHNICAL SPECIFICATIONS

		Kit with probe and D50S PRO		Kit with digital indicator	
		809.1303	809.1301	809.1305	809.1304
Measuring range	mm	M3 Kit probe 10 mm	M3 Kit probe 25 mm	M3 Kit S_Dial PRO M3 25 mm	M3 Kit S_Dial PRO M3 50 mm
Max. Error	µm	0.6	0.8	1.0	1.2

Digital indicator testing stand M3

BASIC INSTRUMENT

Kit with probe and D50S PRO

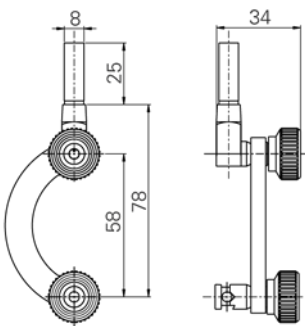
- Stand M3 (909.1300)
- Ceramic bloc gauges
- Thermal protection of the probe reference
- D50S PRO + probe calibrated
- Cable RS232C (925.5609)
- Charging unit according to country (904.4200/01/03/04/05)
- External contact (foot-pedal 904.4101)
- CD- with inspection software SYCOPRO II (981.7124)
- Accessory for lever indicators (909.2010)
- Instruction manual

Kit with digital indicator

- Stand M3 (909.1300)
- Ceramic bloc gauges
- S_Dial PRO M3 with special measuring force
- Cable Proximity USB (926.6721)
- External contact (foot-pedal 926.7020)
- CD- with inspection software SYCOPRO II (981.7124)
- Accessory for lever indicators (909.2010)
- Instruction manual

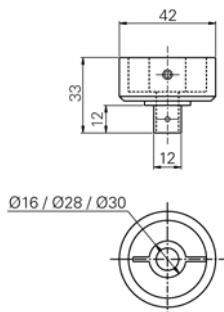
B

ACCESSORIES



909.2010

Clamping device for test indicator



909.2011

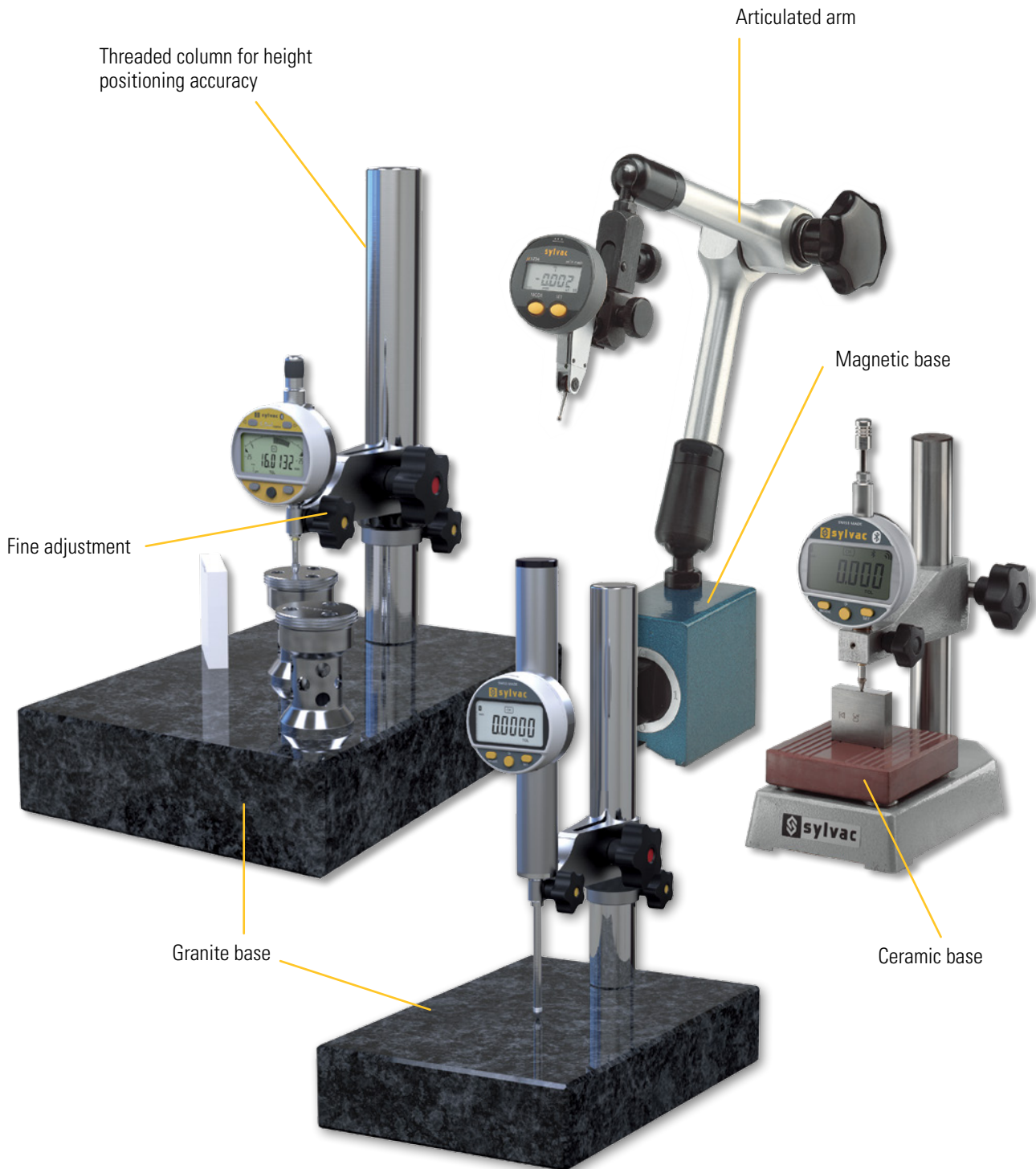
Clamping device for dial gauges Ø 16 / 28 / 30 mm

Measuring stands

DESCRIPTION

- A selection of universal measuring stands for fixing all probes, test indicators and dial gauges
- Clamping on $\varnothing 8$ mm, $\varnothing 25$ mm or dovetail on magnetic stand

B



Measuring stands

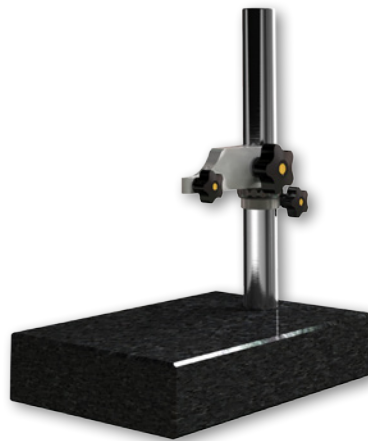
TECHNICAL SPECIFICATIONS



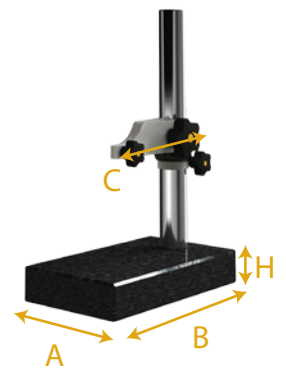
908.1201



908.1209



808.1204



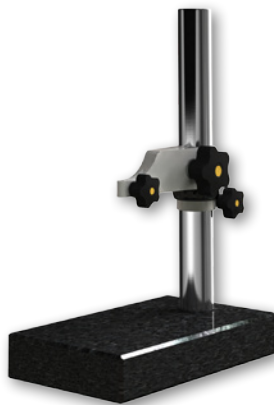
		908.1201	908.1209	908.1207	808.1204	808.1205
Base		magnetic ¹⁾	Cast iron ceramic table	granit grade 00	granit grade 00	granit grade 00
Base dimensions AxBxH	mm	70x46x65	85x85x25	200x130x40	300x210x60	300x210x60
Central locking		•	---	---	---	---
Column	mm	---	Steel Ø 25	Steel Ø 25	Steel Ø 35	Steel Ø 35
Clamping dimension	mm	Ø 8	Ø 8	Ø 8	Ø 8	Ø 25
Dist. Column.-meas. point. C	mm	---	78	60	115	115
Measuring range	mm	---	0 - 115	---	0 - 260	0 - 260
Total height	mm	430	215	450	360	360
Weight	kg	2.2	4.3	4.3	13.4	13.5
Fine adjustment		---	---	---	•	•

¹⁾ Gripping coefficient : 600N

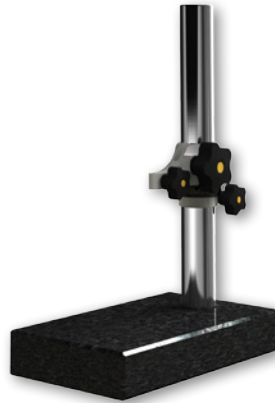
Measuring stands

TECHNICAL SPECIFICATIONS

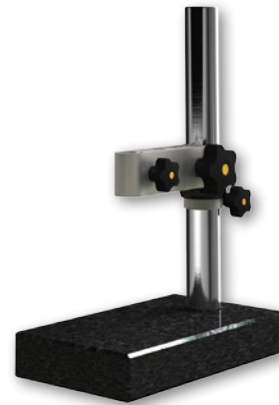
- Superior Swiss Made supports with reinforced column and precision measuring arm ensuring optimal parallelism and rigidity reducing the measurement error due to the carrier. These measuring stands are equipped with a ring allowing fine height adjustment and a 00 grade granite base.



808.1206



808.1203



808.1202

		808.1206	808.1207	808.1202	808.1203	808.1201
Base		granit grade 00	granit grade 00	granit grade 00	granit grade 00	granit grade 00
Base dimensions AxBxH	mm	150X100X40	150X100X40	240x140x50	240x140x50	240x140x50
Central locking		---	---	---	---	---
Column	mm	Steel Ø 25	Steel Ø 35	Steel Ø 35	Steel Ø 35	Steel Ø 35
Clamping dimension	mm	Ø 8	Ø 8	Ø 25	Ø 8	Ø 8
Dist. Column.-meas. point. C	mm	70	70	115	70	115
Measuring range	mm	0 - 190	0 - 260	0 - 260	0 - 260	0 - 260
Total height	mm	270	340	340	340	340
Weight	kg	2.9	4.3	6.6	6.5	6.6
Fine adjustment		•	•	•	•	•

