

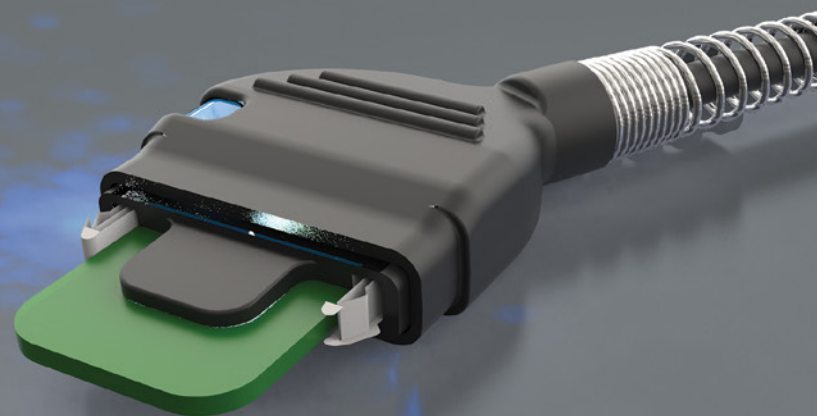
# CONNECTION & SOFTWARE

---

In the modern technical world, the capability of measuring instruments is not limited to the display of measured values. With connection and software abilities, our devices transform into even more precise, efficient, and productive machines.

Thanks to a great choice of connecting cables, the Sylvac instruments are compatible with the majority of data acquisition systems.

**RS232, USB or Wireless data output**



# Wireless transmission

# BLUETOOTH®

## DESCRIPTION

- Possibility to connect up to 8 instruments
- Duplex data transmission
- Easy programming
- Individual identification of each instrument *Bluetooth*® technology
- Confirmation of transmission



## TECHNICAL SPECIFICATIONS

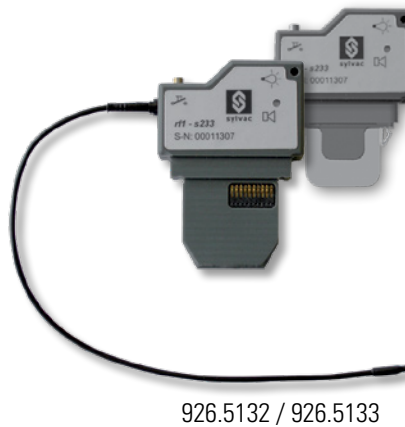
		981.7100
USB		•
Coupled instruments per module		8
Automatic detection of instrument		•
Instruments and software compatibility		D300S & SylConnect & Vmux
Transmission distance <sup>1)</sup>	m	15

<sup>1)</sup> 1 module per instrument is required when used with SylConnect (up to 8 modules)

# Wireless transmission

## DESCRIPTION

- Possibility to connect up to 120 instruments on only one receiver
- Choice of modules according to the instruments
- Transmission on long distances
- Easy programming
- Individual identification of each instrument
- Confirmation of transmission
- Battery life : 2 years in standard use



## TECHNICAL SPECIFICATIONS

		926.5110
USB		•
Confirmation of transmission OK/KO		•
Attribution of the addresses of the modules by software		•
Software interfaces and configuration menu		•
Transmission distance <sup>1)</sup>	m	200

<sup>1)</sup> with large antenna

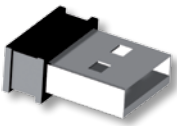
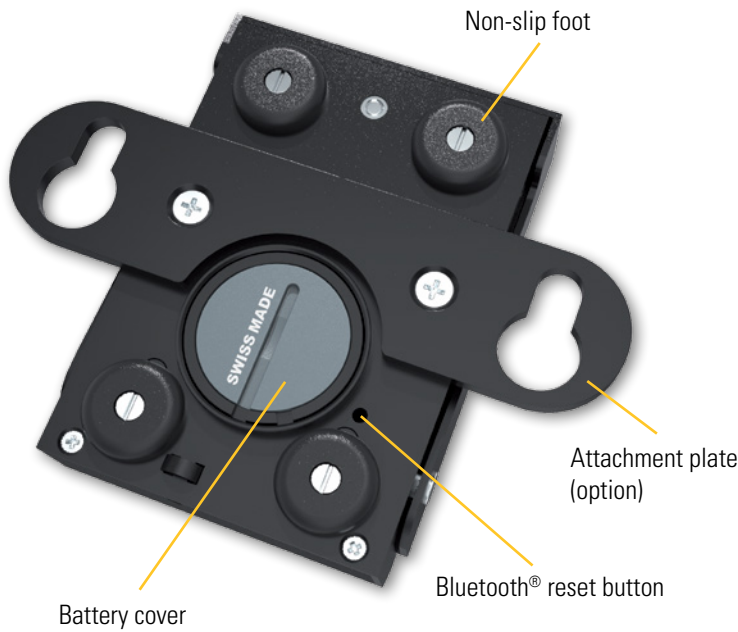
# Wireless transmission

# S\_Footswitch BT

## DESCRIPTION

## BLUETOOTH® FOOTPEDAL

- Robust Bluetooth® footpedal
- IP rating IP53
- Battery life : 3 years (Battery CR2477)
- Possibility of triggering sequences from the software Vmux



Bluetooth® dongle 981.7100

## TECHNICAL SPECIFICATIONS

Bluetooth® Footpedal		926.7022
Connection		Bluetooth® wireless technology*
Weight	g	260
Software compatibility		Vmux (1.37 and later)
Transmission distance <sup>1)</sup>	m	up to 15m

<sup>1)</sup> depends on the environment

\* Connection with dongle #981.7100

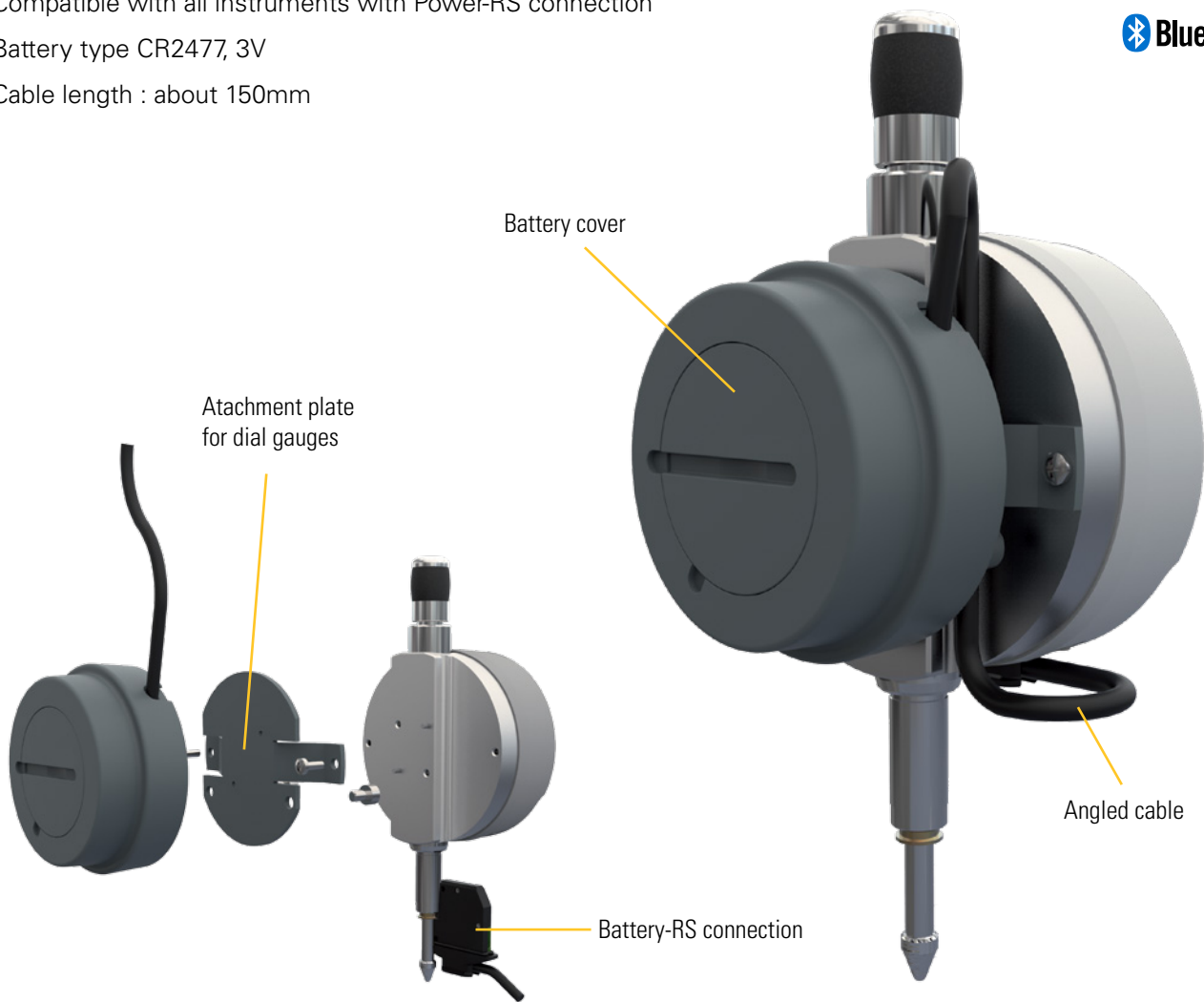
Accessories		926.7023	985.2217
Description		Fixing plate	Adapter for battery CR2032
Weight	g	85	5

# Wireless transmission

# Battery Pack

## DESCRIPTION

- External power-supply for Bluetooth® instruments
- Compatible with all instruments with Power-RS connection
- Battery type CR2477, 3V
- Cable length : about 150mm



## TECHNICAL SPECIFICATIONS

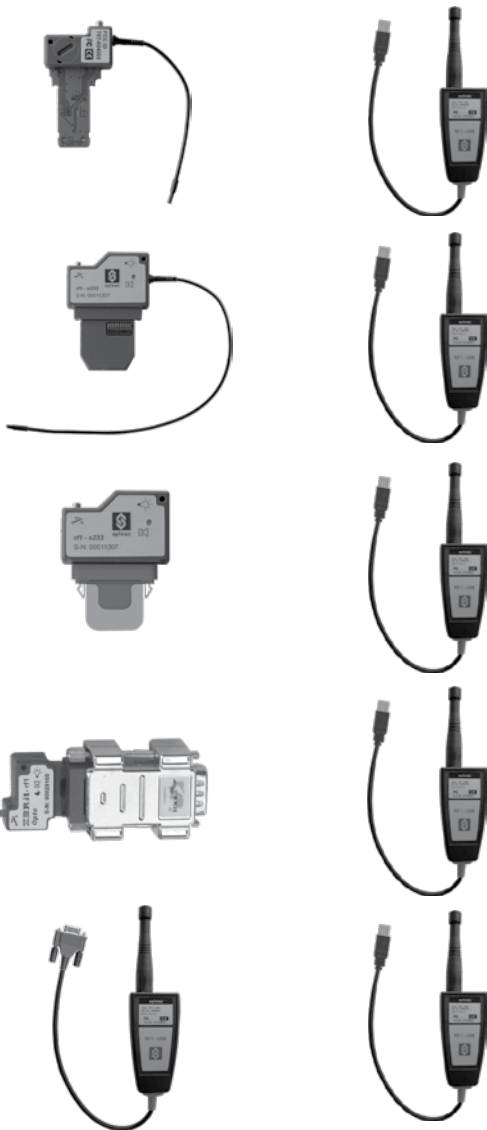
<b>Battery Pack</b>		<b>926.7024</b>
Connections		Power-RS / Battery-RS
Weight	g	71.6 (91.4g with attachment plate)
Capacity max.	mAh	1000
Clamping		compatible with dial gauges Ø60mm
Cable length	mm	150

<b>Accessories</b>		<b>985.2217</b>
Description		Adapter for battery CR2032
Weight	g	5

# Wireless transmission

## CONNECTION

**Bi-directional**  
**Programmable by PC**



Opto module + USB receiver	926.5131 926.5110		
RS Power module + USB receiver	926.5132 926.5110		
Proximity module + USB receiver	926.5133 926.5110		
Adapter RS232/Opto + Opto module + USB receiver	926.5130 926.5131 926.5110		
RS232 module + USB receiver	926.5120 926.5110		

# Wireless transmission

## CONNECTION











S_Cal Pro / S_Mike Pro	S_Cal Work, Ultra UL	S_Depth PRO S_Scale WORK	Protractor	S_Dial S233 / S234	S_Dial ONE / S_Dial WORK S_Dial PRO / Hi_Gage ONE	Xtreme 2	Digital microscrew	Hi_Cal	PS16 V1 VS	S_View D50S / D80S PC output	S_View D200S	D300S instr. input	D300S output PC	D302 / D304	PC input
	•		•						•						•
		•		•	•	•	•								•
•					•										•
								•		•					•
											•				•

## CONNECTION

Our cables are available in various lengths indicated below.

On request, we can deliver our special length cables, within the following limits:

- RS232 cables: maximum length 15 meters
- USB cable: maximum length 7 meters.

	Standard 2 m	Standard 3 m	Standard 5 m	≤15 m	Bi-directional	Programmable by PC
	926.5521	--	--	926.5535		
	926.6521	--	--	926.6535	●	
	926.6538	--	--	926.6542	●	
	926.6539	--	--	926.6543	●	
	926.6621	--	--	<sup>1)</sup>	●	
	--	905.4516	--	905.4519	●	
	--	905.4538	--	<sup>1)</sup>	●	
	--	926.6821	--	<sup>1)</sup>	●	
	--	926.6838	--	<sup>1)</sup>	●	
	--	--	926.6101	--	--	--

<sup>1)</sup> Maximum 7m (Standard 5m)














# Cables

# S\_Connect

## CONNECTION

S_Cal Pro / S_Mike Pro	S_Cal Work, Ultra UL 3	S_Depth PRO S_Scale WORK	Protractor	S_Dial S233 / S234	S_Dial ONE / S_Dial WORK S_Dial PRO / Hi_Gage ONE	Xtreme 2	Digital microscrew	Hi_Cal	PS16 V1 VS	S_View D50S / D80S PC output	S_View D200S	D300S instr. input	D300S output PC	D302 / D304	D400S	D70S/H/I	S_Dial WORK PLC
•	•		•						•			•					
	•		•						•			•					
	•		•						•			•					
	•		•						•			•					
	•		•						•			•					
		•		•	•	•	•					•					
		•		•	•	•	•					•					
		•		•	•	•	•					•					
		•		•	•	•	•					•					
					•												•

## CONNECTION

	Standard 2 m	Standard 3 m	≤15 m	Bi-directional	Programmable by PC
	--	926.6723	<sup>1)</sup>	●	
	--	926.6721	<sup>1)</sup>	●	
	--	925.5609	<sup>1)</sup>	●	
	--	804.1210	--	●	
	--	926.6001	--	●	
	925.1142	--	--	●	
	--	925.1143 <sup>2)</sup>	--	●	
	--	926.5505	--	●	
	--	804.2201	--		
	--	804.2204	--		
	--	804.2205	--		

<sup>1)</sup> Maximum 7m (Standard 5m)

<sup>2)</sup> must be connected with bi-directional cables only

# Cables

# S\_Connect

## CONNECTION

S_Cal Pro / S_Mike Pro	S_Cal Work, Ultra UL 3	S_Depth PRO / S_Scale WORK	Mesureur d'angles	S_Dial S233 / S234	S_Dial ONE / S_Dial WORK Hi_Gage ONE	PS16 V2	Digital microscrew	Hi_Cal	PS16 V1 VS	S_View D50S / D80S PC output	S_View D200S	D300S instr. input	D300S output PC	D302 / D304	D400S	D70 H/I	D70 S	D70 A	D62S	Xtreme 3 / UL4	M-Bus (except RS)	Z5
•					•	•						•								•		
•					•	•						•									•	
								•		•	•	• <sup>6)</sup>		•	• <sup>4)</sup>		•		•		•	
											•		•									
						•		•						•					•			•
3)	3)	3)	3)	3)	3)		3)	3)	3)	•	•				• <sup>5)</sup>	• <sup>5)</sup>	• <sup>5)</sup>	• <sup>5)</sup>	•	3)		
3)	3)	3)	3)	3)	3)		3)		3)											3)		
																						•
																	• <sup>7)</sup>		• <sup>7)</sup>			
																• <sup>8)</sup>		• <sup>8)</sup>				
																		• <sup>9)</sup>				

<sup>3)</sup> must be connected with RS232 cables

<sup>4)</sup> For MB-XX module and RS232 PC connections

<sup>5)</sup> RS232 connection to PC (D70S version and D400S only) bidirectional. Versions D70I/H require a crossover RS232 cable.

<sup>6)</sup> Not working on PC

<sup>7)</sup> Update of the units

<sup>8)</sup> Crossover cable for PC connection

<sup>9)</sup> Connection cable for MB-I/O

# Sylvac softwares

## DATA TRANSFER

### SYLCOM

Latest of our softwares, SYLCOM allows to connect all the Sylvac instruments either by USB cable or by Bluetooth®. This universal software can be used to display values in different modes, to upload part drawing in background, to show the tolerances status, to define measuring sequences and to export data to Excel or to third party software.

Currently two versions are available:

### SYLCOM LITE

Free software downloadable on [www.sylvac.ch](http://www.sylvac.ch). Full features as SYLCOM Standard, but limited to one instrument connected.

### SYLCOM Standard

Software protected by payable license (dongle or web license). Allows to connect up to 16 instruments.

There is also an upgrade from Sylconnect to Sylcom Standard.

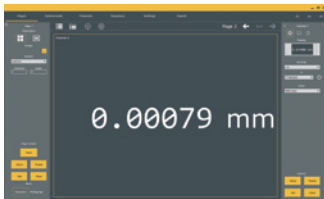
Additional versions (modules) will be available in the coming months. For features and functionality, refer to the table at the end of the chapter.



Free Sylcom LITE version on [www.sylvac.ch](http://www.sylvac.ch)

# SYLCOM

Data processing software



Channel display



Multi-channel display with colour-coded tolerances



Multi-channel analogue display

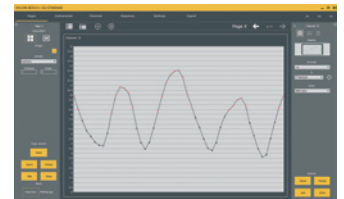


Chart display

### Softwares

### Order number

Sylcom LITE	<b>FREE</b>
Sylcom Standard (Dongle)	981.7132
Upgrade Sylconnect to Sylcom*	981.7133

\* contact us to get the procedure for the update

### Accessories

### Order number

Bluetooth® Dongle	981.7100
USB pedal	926.7020
USB pedal robust	926.7021
Bluetooth® footpedal	926.7022

# Applications

## DATA TRANSFER

### Vmux

Virtual multiplexer which allows you to connect and organise the whole range of SYLVAC Bluetooth® Smart and USB products, by redirecting them to the virtual COM ports.

The software supports up to 32 instruments. (max. 32 USB or max. 16 Bluetooth® and 16 USB). For Bluetooth® connection, a 981.7100 dongle is required which must be connected to the PC via a USB port.

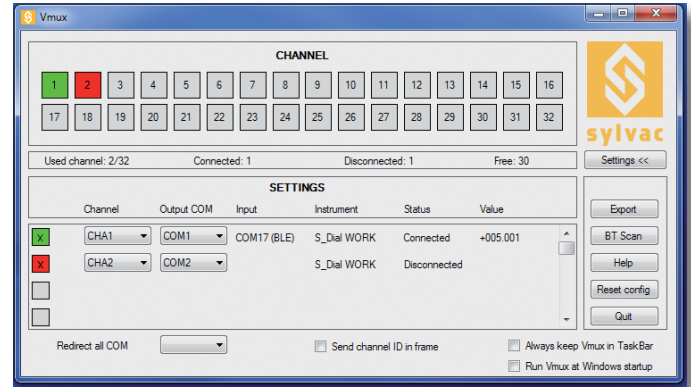
Up to 8 Bluetooth® instruments per dongle!

The protocol used ensures compatibility with all SPC software by sending and/or requested data via the COM ports.

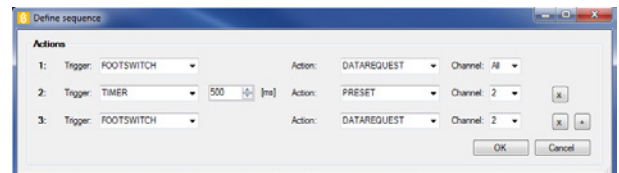
Used to send data to existing applications. Incorporates sending of data in Excel®

**Vmux LITE** : allows up to 1 instrument and 1 pedal to be connected.

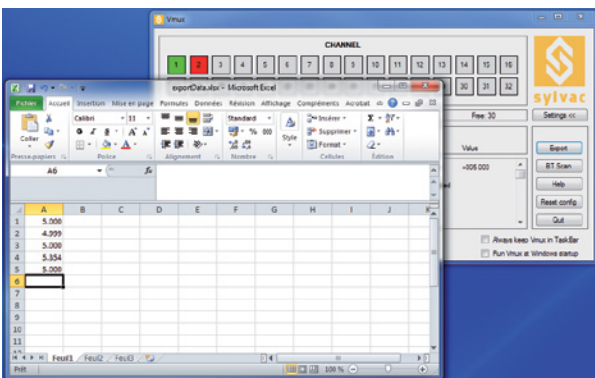
**Vmux Standard** : allows up to 32 instruments to be connected.



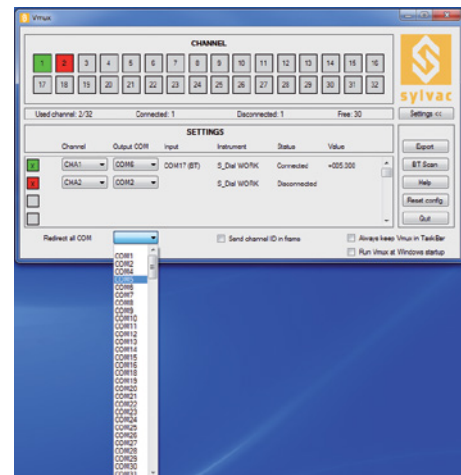
Basic display



Defining a sequence



Exporting data in Excel®



Port COM changing

Softwares	Order number
Vmux LITE	FREE
Vmux	981.7161

Try the free version Vmux LITE available on our website [www.sylvac.ch](http://www.sylvac.ch)

Accessories	Order number
Bluetooth® Dongle	981.7100
USB pedal	926.7020
USB pedal robust	926.7021
Bluetooth® footpedal	926.7022

# Applications

## DATA TRANSFER

### Sylvac BT Smart Android & Apple

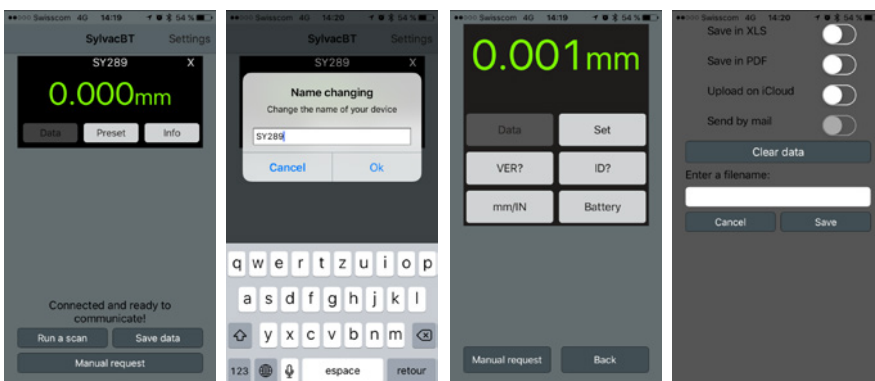
Enables the display of data from *Bluetooth*® instruments on touchpads and smartphones Android 4.3 version and Apple IOS7, equipped with *Bluetooth*® wireless technology.

Ability to save data on the touchpad or smartphone into a PDF or Excel and export the data in Google Drive or iCloud.

Available for free on the Google Play Store and the App Store.



H



Instrument connected

Name changing

Info

Save Data

**No dongle required !**



# Various softwares

## OVERVIEW OF SOFTWARE AND FUNCTIONS

	SYLCOM						VMUX		SYLVAC BT SMART APP		
	LITE	Standard	Advanced Package	PRO Package	SCP Package	Upgrade from Sylconnect	LITE	Standard	ANDROID	IOS	WINDOWS
		981.7132	981.7133	981.7134	981.7135	981.7139		981.7161			
<b>NUMBER OF INSTRUMENTS</b>			<i>Scen</i>								<i>Scen</i>
Max. 1	●						●		●	●	●
Max. 16		●		●	●	●					
Max. 32								● <sup>1)</sup>			
Max. 254			● <sup>2)</sup>								
<b>PLATFORMS</b>											
Windows 7	●	●	●	●	●	●	●	●			
Windows 8.1	●	●	●	●	●	●	●	●			
Windows 10	●	●	●	●	●	●	●	●			
Windows Mobile											● <sup>3)</sup>
Android									● <sup>4)</sup>		
IOS										● <sup>5)</sup>	
Dongle required for Bluetooth® instruments	●	●	●	●	●	●	●	●			
<b>FUNCTIONS</b>											
Export to ASCII	●	●	●	●	●	●					
Export to Microsoft Excel®		●	●	●	●	●			●	●	●
Export to PDF									●	●	●
Immediate export to external program	●	●	●	●	●	●	●	●			
Send by email									● <sup>6)</sup>	●	●
Save data to Cloud									● <sup>7)</sup>	● <sup>7)</sup>	● <sup>7)</sup>
Save data to device									●	● <sup>8)</sup>	●
Communication gateway (virtual COM port)							●	●			
Display value	●	●	●	●	●	●	●	●	●	●	●
Display tolerances	●	●	●	●	●	●			●	●	●
Analogue display	●	●	●	●	●	●					
Chart display	●	●	●	●	●	●					
Multi-channel		●	●	●	●	●		●			
Flatness			●								
Inspection plan				●							
SPC light					●						
Action sequences		●	●	●	●	●					
User management	●	●	●	●	●	●					
Work menu (controlling instrument menus)	●	●	●	●	●	●					

1) Max. 32 USB or 16 USB and 16 Bluetooth®  
 2) via Mbus  
 3) Not currently available  
 4) Minimum Android 4.3 with Bluetooth® 4.0

5) minimum IOS 7 with Bluetooth® 4.0  
 6) Send by email only available if file is saved to device and an email created in an external application  
 7) Android: export to Google Drive/iOS: export to iCloud/Windows: export to OneDrive  
 8) Can be saved to iOS but file can only be retrieved using a computer

# Other

## OTHER ACCESSORIES



Battery CR2032	985.2215
Battery CR2477	985.2216



# Other

## COMPATIBILITY

Calipers S\_Cal, ultra-light calipers ULX4 <sup>1)</sup>, dial gauges S\_Dial (except PLC), micrometers, bore gauges, digital scale S\_Scale, digital micrometer screws, depth gauges S\_Depth, Protractor, Hi\_Gage, Bluetooth® footpedal<sup>1)</sup> and benches table PS16 V2<sup>1)</sup>

Ultra-light calipers ULX4, benches table PS16 V2, Bluetooth® footpedal, Battery Pack

<sup>1)</sup> With adapter